

3Shape Dental System

Do more of what you love



3shape 

Dear dental lab professionals

Research shows that more and more dentists are embracing the predictability, efficiency and improved patient experience enabled by intraoral scanners and software for diagnostics and treatment. Your lab plays a big role in supporting this change. Digital dentists need strong digital partners.

3Shape Dental System is the perfect solution to help you unleash your creativity and be a strong digital partner. Our latest version, Dental System 2020, delivers efficient workflows for the most profitable and in-demand services such as dentures, clear aligners, splints and more.

This year, we're also moving our E1, E2 and E3 lab scanners up to the same next-generation platform as our E4 scanner. The new platform will increase their scanning speeds by 20%. Giving you the speed, power and freedom to do more of what you love backed by an unbeatable combination of precision-imaging seamlessly integrated with our design software.

Michael Jordan once said, "talent wins games, but teamwork and intelligence win championships." With 3Shape Dental System, your team is supported by an unrivaled ecosystem of solutions, technology, and partners to choose from.

Tais Clausen,
Co-Founder of 3Shape

Rune Fisker,
Senior Vice President, Product Strategy



Highlights from 3Shape

Introducing Generation Red E scanners – 20% faster!

The new Red E scanners boast all the award-winning E scanner-benefits but now with 20% extra speed at the same great prices. 3Shape E scanners have 5 MP cameras to deliver unprecedented scan speeds for superior productivity, as well as extreme high accuracy for even precision-demanding cases.



Dive into digital dentures

3Shape Denture software is the leading denture design software. The intuitive software makes denture production more efficient with simple step by step design workflows and support for the latest manufacturing options. Discover more on pages 12 and 13.



Clear aligners to grow your business


Start producing simple clear aligner treatments with 3Shape Clear Aligner Studio. Guided workflows in the software make it easy for you to generate setups and produce aligners with printed models and a vacuum former. Learn how on page 22.

Introducing Generation Red

We proudly present our 20% faster Red E scanners. The 3Shape E1, E2 and E3 lab scanners have been upgraded to the same next generation scanning platform as E4. You will recognize them all by their red ring and speedy performance – at the same great price!

20% faster!
Same great price!



A dark, industrial-looking 3D scanner with a circular opening on the right side. The scanner has a sleek, modern design with a prominent red double-line arc on the right side. The 3Shape logo is visible at the top right, and the model number 'E4' is at the bottom right.

3shape

Do more of what you love faster with the 3Shape **E4 lab scanner!**

The E4 lab scanner is our fastest and most accurate scanner ever. Its superior speed and accuracy reduce scanning steps, save you time, and powers up your productivity.

Speed – full arch scans in just 9 seconds

Scan accuracy – 4 microns

4x5 MP cameras – for impression and die-in-model scanning

E4

3Shape lab scanners for every need

E1 Essential scanning to digitize your lab



Camera: 2 x 5 MP

Accuracy (ISO 12836): 10 µm

Scan speed (full arch): 32 sec

Scan speed (full arch impression): 104 sec

Texture: N/A

Scanning strategy: Standard

E2 Increases productivity and texture scanning



Camera: 2 x 5 MP

Accuracy (ISO 12836): 10 µm

Scan speed (full arch): 24 sec

Scan speed (full arch impression): 72 sec

Texture: B/W

Scanning strategy: Standard

E3 High performance and implant bar accuracy



Camera: 2 x 5 MP

Accuracy (ISO 12836): 7 µm

Scan speed (full arch): 18 sec

Scan speed (full arch impression): 64 sec

Texture: Color

Scanning strategy: Standard

Trade up to the latest lab scanner technology

3Shape has attractive programs for trading up your lab scanner to our new Red E scanners. We also offer a trade-in program for other scanners so you can get started with 3Shape.

Trade up your old scanner and get a special discount on a new one

Older 3Shape scanners may be eligible for our special trade-up discount promotion. Contact your reseller to discover more.

Upgrade to 3Shape Dental System Complete Restorative package

Take advantage of our special Dental System Premium to Complete Restorative software upgrade offer when trading up your old scanner. Contact your reseller to discover more.

E4 Ultra-high speed and accuracy



Camera:	4 x 5 MP
Accuracy (ISO 12836):	4 µm
Scan speed (full arch):	9 sec
Scan speed (full arch impression):	45 sec
Texture:	Color
Scanning strategy:	Die-in-model

D2000 All-in-one scanning for max volume throughput



Camera:	4 x 5 MP
Accuracy (ISO 12836):	5 µm
Scan speed (full arch):	16 sec
Scan speed (full arch impression):	60 sec
Texture:	Color
Scanning strategy:	Die-in-model & All-in-one



Make dentures digitally and **boost your productivity**

Powerful advancements to 3Shape Denture Design software and new possibilities within manufacturing and materials, make it highly attractive for labs to start producing dentures digitally today. The digital workflow reduces your production costs and improves your efficiency.

NEW: Enhanced Gingiva Design

Designing anatomically realistic gingiva just got faster and simpler. Use preset values or customize your settings to deliver a more natural appearance.

NEW: Copy Denture Workflow

Scan existing dentures and design new ones in a few simple steps. The software automatically generates teeth based on the existing dentures. New dentures can be produced either as a single Monoblock or as separated base and teeth.



*Ivotion monolithic denture
Image courtesy of Eric Kukucka, Denturist, Canada*

NEW: Ivotion disc from Ivoclar Vivadent

Fabricate a full denture in one uninterrupted milling process using the innovative Ivotion disc from Ivoclar.

Ivotion uses a unique databased 3-dimensional tooth and dental arch geometry in the disc. Ivotion combines teeth and base material in one bicolor disc to deliver an efficient monolithic digital denture solution.

NEW: Ivoclar Vivadent patented workflow for 3Shape users

Ivoclar Vivadent's Ivotion Denture System will be integrated and included in your 3Shape Dental System 2020.

The workflow includes dental treatment steps, simple and guided design steps, tooth libraries, and the automated oversize milling process for discs.

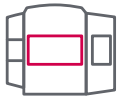
The workflow is available for separate tooth and denture base materials as well as the monolithic milling process with the new Ivotion disc



"Going digital was the best thing we ever did. The number of patient adjustments is down by over 80%."

Esther Schwenning

Registered Denturist, BC, Canada



Mill

Milling for high esthetic dentures

Milling provides high quality results using proven and esthetic materials. 3Shape integrates with a wide range of milling machines with more being added all the time.



3D print

Save costs with 3D Printing

3D printing enables you to provide a functional denture at lower cost. 3D printers and materials are evolving at a rapid pace and constantly improving durability and esthetics. 3Shape's Denture software is optimized for 3D printing, which promises to revolutionize the denture market.



Pre-manufactured teeth

If you prefer to use pre-manufactured teeth, you can choose from a wide range of denture teeth libraries shown below. Either Mill or 3D print the denture bases and glue in the pre-manufactured teeth.

Access to major teeth providers

Dental System supports major denture teeth libraries enabling you to choose your preferred manufacturer. We are constantly adding more libraries to give you the most versatile denture solution.

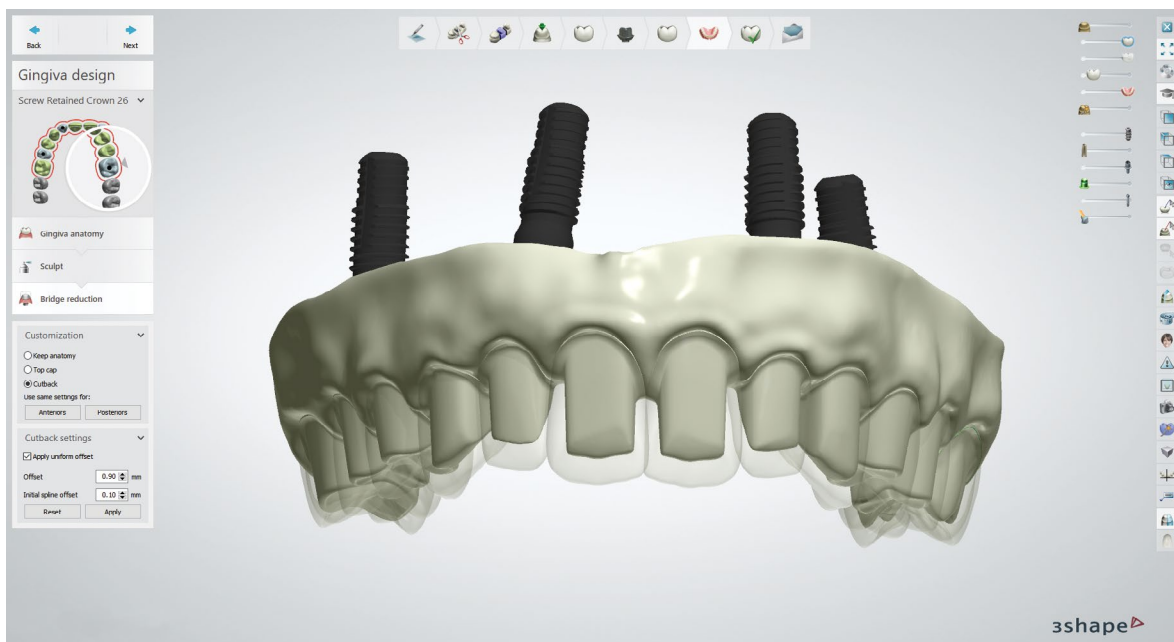


See what's new in 3Shape Dental System 2020

3Shape Dental System 2020 enables you to do more of what you love, smarter and faster with enhanced workflows for improved productivity and more stability than ever.

NEW: High esthetic implant bridges just got easier with the new reduced implant bridge workflow

Design highly esthetic and functional full anatomical bridges easier than ever before with our new all-in-one reduced implant bridge workflow. You get the flexibility to offset or design thimbles in just a few clicks. You can combine any type of cutback option or leave a full anatomical crown. Final crown shape can also be used to create optimal anatomically correct restorations, as well as lingual bands and facial cutbacks.



NEW: Access 3Shape Academy tutorials directly

Directly access more than 130 3Shape Academy tutorials inside the Dental System software in just a click, to help you advance with your design.

NEW: Simpler material management

New filter enables easy browsing for materials in the order form. Place your favorite materials at the top of the list for fast access.

More flexibility with additional scans

NEW: Morph designs to additional scans

Morph designs to additional case scans with the new Smile Composer® tool. No need to rely on one pre-preparation, you can upload a wax-up, previous design, or mock-up, to- replicate during modeling.

NEW: Save combined models and designs

Merge all selected models into one and save the combined design for future use. Any information added is saved in the extended scan.



Drive efficiency with Lab Management System integration

NEW: You no longer need to fill in case information in both your Dental System and Lab Management System forms. 3Shape Dental System 2020 is now integrated with four of the major Lab Management Systems and automatically transfers case information to save you time!

Synchronize case information and status

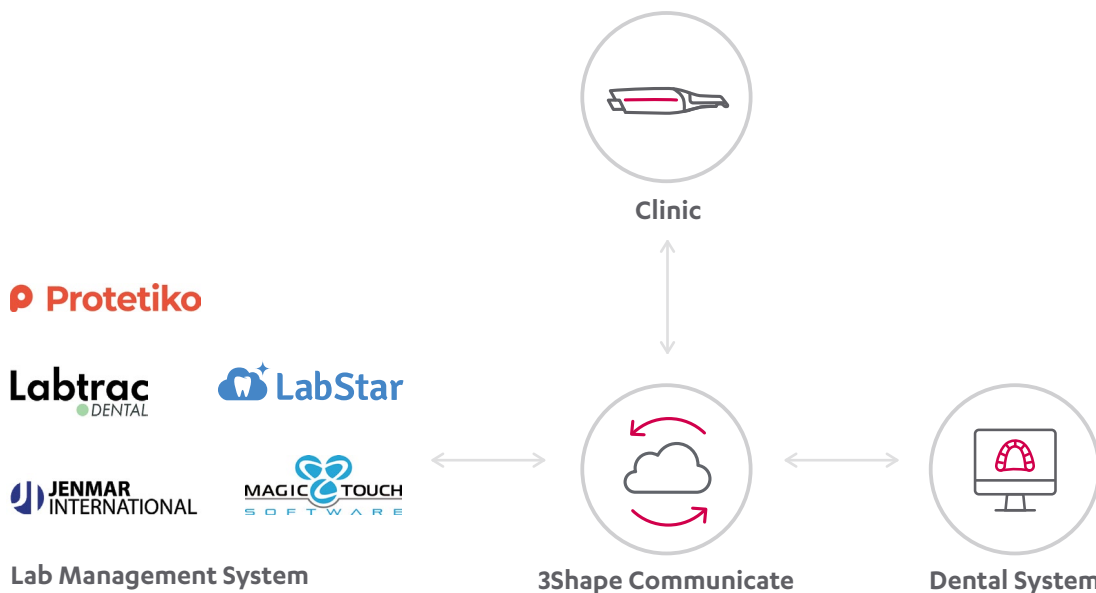
3Shape Dental System automatically synchronizes case information and status with your Lab Management System. So, you don't need to enter information twice and you can use your Lab Management System as a core planning tool too.

Integrate with global LMS providers

3Shape Dental System is fully integrated with LMS providers: Jenmar, Labtrac, LabStar, Magic Touch Software and Protetiko.

Exclusive to 3Shape Dental System

3Shape Dental System is the only lab software in the market to provide integration with major Lab Management System providers.



Create the order in your Lab Management system and synchronize it directly with Dental System through Communicate®. 3Shape TRIOS® scans from your dentist go to both Dental System and your Lab Management system

Get help when you need it from **design services**

Take advantage of design services to get extra help when you need it most. Design services can also help you to add new indications to your lab's services and expand your business.



Use for peak periods

Get a helping hand during peak periods, emergencies or absences – or when just you need to leave early.



New indications

With Dental System, you're connected to design service providers so you can offer new indications to your customers.



Connect through 3Shape ecosystem

From crown and bridge to implantology, removables and orthodontics, connect direct via 3Shape Communicate® to design service partners. Manufacturer the designs in-house or with partners.

Connect with **FullContour** –
a 3Shape design service partner



Seamless integration

FullContour is seamlessly integrated with 3Shape Dental System. You can access the FullContour's design platform with one click in Dental System. FullContour is the first 3Shape Design Partner offering design for all indications to customers in USA and Europe in English, German and French. Go to fullcontour.com for more information.

Augmented reality with IvoSmile

3Shape Dental System 2020 will be integrated with IvoSmile® augmented reality app by Ivoclar Vivadent. The integration enables your lab to receive patient face images, including the proposed aesthetic treatment, right from the app to your Dental System. You can then design the restoration using actual patient images and send the design back to the IvoSmile app for review by the doctor and patient.

Fabulous Smiles by the book

Globally renowned technicians, Przemek Seweryniak and Kate Brantvik have created a unique smile design platform that begins with their book, "Fabulous Smiles." The dental community has embraced the innovative new platform, making use of both the book and 3Shape Dental System software. The workflow enables labs, doctors, and patients working together, creating beautiful smiles. Dental System is the only software in the market integrated with the platform.



Discover more: www.fabsmilesbook.com

NEW:

1. **Excite** your patient
Use IvoSmile® app to visualize the treatment



4. **Send final design** for approval®
Send finalized design back to IvoSmile® app



**3Shape
Communicate**

2. **Send** treatment proposal to Lab
Share the design and patient images



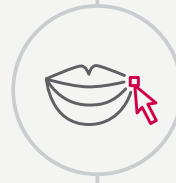
3. **Design** in Dental System
Design final treatment based on IvoSmile® case



Fabulous Smiles workflow



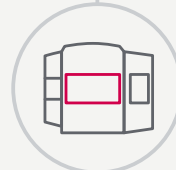
1. **Choose a smile** from
the "Fabulous Smiles" book



2. **Smile Design**
using library from
the selected smile



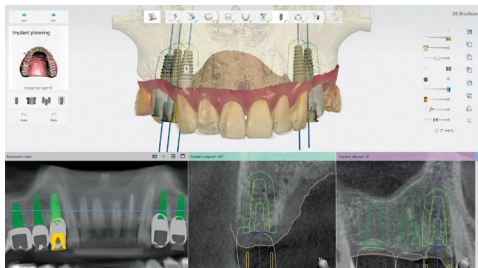
3. **Send Smile Design**
to Lab for exact physical
replication



4. **CAD design and manufacture**
using corresponding 3D smile library
in Dental System (TRIOS® scanned)

Be your dentists' #1 partner for implants

Provide implant services and secure the restoration order! Boost your 3Shape Dental System with 3Shape Implant Studio® software to easily design and produce surgical guides, and offer implant planning as a service. With 3Shape Implant Studio, you are your dentists' preferred partner for implant services.



Deliver implant planning and surgical guides with Implant Studio

Easily plan single to fully-edentulous implant positions based on an initial crown design, or apply planning received from the dentist. Use 3Shape Communicate® (or other communication tools) to quickly share and confirm your planning results. Then design and produce tooth- and bone-supported* guides based on the implant planning.



Provide the complete implant restoration package

When you deliver the implant planning and surgical guides to your doctor, you improve your chances of winning the full restorative work. Once you've secured the order, use Dental System to easily create customized healing and final abutments, temporary screw-retained crowns and bridges, and the final prosthetics.

Optimize case communications with your partners

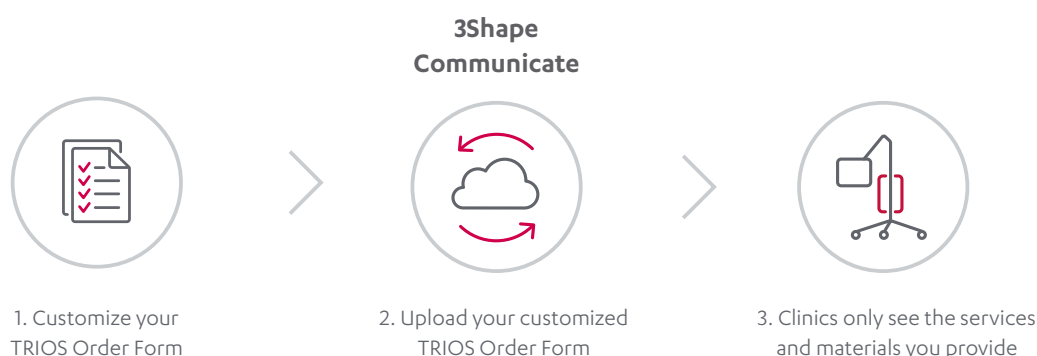
Take advantage of 3Shape implant software and Dental System to optimize digital case communications with your dentists. This enables you to be a strong partner from the early planning of the case to the design and final restoration package. Besides securing restorative work, you build a stronger relationship with your dentist as a dependable service partner.



*Bone-supported surgical guides are not cleared by the FDA for clinical use in the USA.

Dentists are going digital. Get connected!

More and more dentists are taking impressions digitally and using software to engage their patients. Your lab's ability to work with intraoral scans is essential. 3Shape makes it easy for you to connect and receive intraoral scans and market your lab to practices. And now with new 3Shape TRIOS® customizable order form, you can make sure practices only see the services and materials your lab provides.



NEW: Customize the TRIOS order form specifically to your lab

Now you can customize the TRIOS Order Form in your 3Shape Communicate® to only include the materials and indications your lab offers. That means clinics only see and order indications and materials your lab provides.



Make simple **clear aligner** treatments right in your lab

Clear aligners are easy to do with 3Shape Clear Aligner Studio. The step-by-step solution is the fast and easy way for you to add clear aligners to your lab's services.

Start with simple clear aligner treatments

Clear Aligner Studio's automated features and guided workflows make it easy to create simple clear aligner treatments like anterior cases. Just print your models and vacuum form the aligners.

Open design and production options and partners

3Shape Clear Aligner Studio is compatible with a wide range of 3D printers and vacuum forming machines. You can also choose to outsource design to 3Shape design service partners for the setup and staging and production to qualified 3Shape manufacturing partners.



3Shape Clear Aligner Studio is available as an add-on module to Dental System.



"3Shape's software has made it very easy for us to move into this new market. Since we started offering clear aligners, we have probably tripled the amount of customers in the past few years."

Bernhard Egger
Owner, Natural Esthetics

Join the 3Shape Community

With more than 10,000 members, the 3Shape Community is your professional platform to broaden your knowledge and connect with labs and clinics around the globe. If you want to share your work, use the Community to post case studies or just start a discussion in the forum. It's free to be a member.

Get help with your 3Shape product

Take advantage of how-to guides, training videos and tutorials on design workflows, system configurations and tips and tricks – all in the Community.

Support forum

Get answers to your questions direct from specialists and take advantage of the case study library.

Network with colleagues

Discuss CAD/CAM dentistry, share your experiences, and find answers on the forum or check the event calendar to discover courses, events and webinars.

Join the 3Shape Community at
community.3shape.com



Tailor to your needs

1. Choose your scanner

E1

Essential scanning to digitize your lab



E2

Increases productivity and texture scanning



E3

High performance and implant bar accuracy



E4

Ultra-high speed and accuracy



D2000

All-in-one scanning for max volume throughput



2. Choose your design software

Complete Restorative

Get all indications from the Premium and Removable packages plus all available restorative add-ons to design abutments, implant bars, models and more at an attractive price.



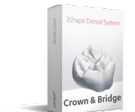
Premium

Design all indications from the Crown & Bridge package plus splints, digital temps, digital smile design, RealView, telescopes, post & core and more.



Crown & Bridge

Design full anatomies, bridges, copings, frameworks and wax-ups. Use CAD points to provide advanced indications.



Removable

For labs that specialize in providing full and partial dentures.



Scan Only

The easy way to go digital! Receive 3Shape TRIOS® cases or scan gypsum models and send to an external design service.



Optional Add-Ons and CAD Points

Supplement your solution with add-on modules to offer abutments, implant bars and bridges, models, dentures and more. Or, purchase CAD Points to use on a case-by-case basis for indications not included in your package.



3. Choose your service package to your needs and budget

LabCare subscription package

Authorized support

Get help from experts in your local language and time-zone *

Software upgrades

Get all new software releases with the latest developments including libraries, workflows and tools

Wide range of training options

Access to hands-on training events and lectures held by authorized 3Shape experts and renowned speakers *

25% discounts

on additional seats
on subscription of additional seats
on 3Shape Academy training at a local 3Shape facility*

Protect your investment

5-year warranty and replacement service with purchase of E4 or D2000 scanners**



Pay for support

Charged per case



No upgrades

You get the software version corresponding to the year of purchase



No expert training

Self-training using available 3Shape videos and manuals



No discounts

Not eligible for special offers



No options

No option for warranty and replacement service

*Subject to availability in your country

**For other scanners, you can purchase 3Shape's Warranty and Replacement service separately

The widest range of treatment workflows

Single crowns



Full anatomical bridges



Temporaries



Virtual diagnostic wax-ups including models



Maryland Bridges



Copings



Table-tops and non-prepared veneers



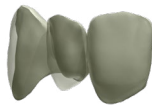
Splints



Framework bridges



Crowns and bridges with facial cutback



Primary telescope



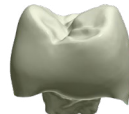
Secondary telescope



Inlays, onlays and veneers



Post retained crown (Richmond crown)



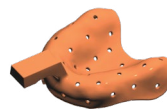
Standard post and core



Positioning guides



Customized impression trays



Digital Smile Design & RealView



3Shape is renowned for its unrivaled range of treatment workflows covering the diverse needs and preferences of dentists and their patients. Choose the right software package according to your needs and later expand your portfolio with more services to stay ahead. See 3shape.com/lab for more details.

Single arch dentures



Dentures



Removable partial dentures



Customized impression trays



Implant models with analogs



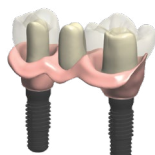
Implant bars



Screw retained crowns with cutback



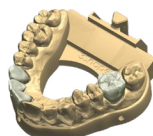
Implant frame bridges



Customized impression trays for implant cases



Crown and bridge models



Screw retained bridges



Customized abutments



Screw retained crowns



IvoSmile®



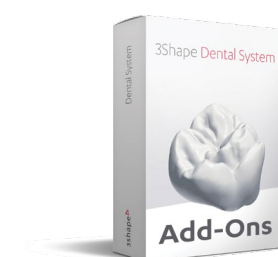
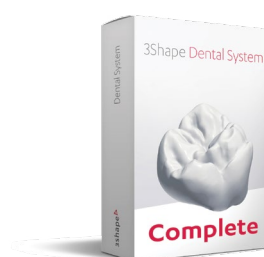
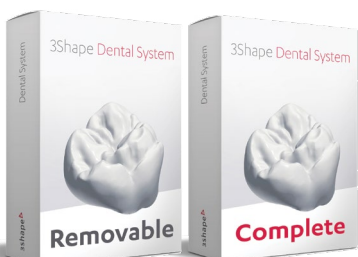
Clear Aligners



Implant planning and surgical guides



Orthodontics and appliances



About 3Shape

3Shape is changing dentistry together with dental professionals across the world by developing innovations that provide superior dental care for patients. Our portfolio of 3D scanners and CAD/CAM software solutions for the dental industry includes the multiple award-winning 3Shape TRIOS® intraoral scanner, the 3Shape X1® CBCT scanner, as well as market-leading scanning and design software solutions for both dental practices and labs.

Two graduate students founded 3Shape in Denmark's capital in the year 2000. Today, 3Shape employees serve customers in over 100 countries from 3Shape offices around the world. 3Shape's products and innovations continue to challenge traditional methods, enabling dental professionals to treat more patients more effectively.

Let's change dentistry together

Why 3Shape?

Fast scanners with ISO-documented high accuracy

Intuitive software with a wide range of indications

Training and support provided by 3Shape Academy and customer care teams

The choice of more than 20,000 labs around the world

Contact your reseller regarding availability of 3Shape products in your region.

82602779 3Shape Dental System 2020 Broch EN

© 3Shape A/S, 2020. All rights reserved.
The 3Shape name and logo and/or other trademarks mentioned herein are trademarks of 3Shape A/S, registered in US and other countries.

3shape 