

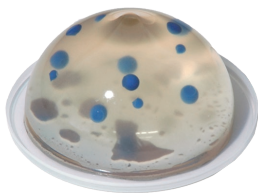
US-9



Ultrasound-Guided Breast Biopsy Phantom

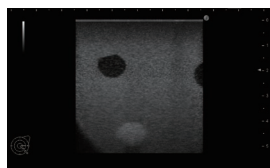
Basic (Transparent)

Hand-eye coordination



Advanced (Opaque)

Acquisition of skills in safe and reliable needle biopsy



Enhance confidence in performing safe and accurate breast biopsies

Combine two types of breast phantoms for step-by-step development of skills in needle biopsy

FEATURES

- 1 | Fine Needle Aspiration Biopsy (FNAB), Core Needle Biopsy (CNB) and Mammotome biopsy can be performed under ultrasound guidance.
- 2 | Realistic breast tissues that simulate the softness and resistance of the mammary gland.
- 3 | Targets are colored to confirm successful sampling.

SKILLS

- | Hand-eye coordination in ultrasound biopsy
- | Localization of targets under ultrasound guidance
- | Sampling of target

DESCRIPTIONS

SPECIFICATIONS

Size: 16 dia. x H8 cm / 6.3 dia. x H3.2 inch Weight: 0.75kg / 1.7 lbs

SET VARIATIONS

Duo set: 11387-000	transparent + opaque type
Transparent set: 11387-100	1 pair of transparent type
Opaque set: 11387-200	1 pair of opaque type

MATERIALS

Hydrogel
Latex free

SET INCLUDES

1	pair of phantoms
1	instruction manual

REPLACEMENT PARTS

-

RECOMMENDED DEVICES

-

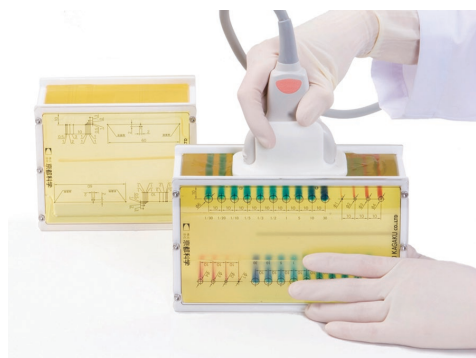
* Ultrasound scanner is not included.

US-4

Breast Ultrasound QA Phantom

Ensure highly detailed images for reliable breast cancer examinations

Ultrasound QA phantom for high precision imaging in the high frequency sonography, typically around 10 MHz, required in breast examination. For monthly basic quality check of ultrasound images along with longer term quality assurance to maintain consistency in performance of scanners and transducers.



Mass targets block

Sonic velocity: 1434 m/sec at 25°C
Attenuation coefficient: 0.59 dB/ cm MHz at 25°C
Acoustic impedance: 1.37 rayl at 25°C
Integrated targets: gray scale targets/ cyst targets

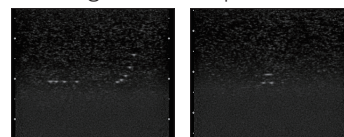
Mass targets block (contrast resolution)



Dot targets block

Sonic velocity: 1442 m/sec at 25°C
Attenuation coefficient: 0.73 dB/cm MHz at 25°C
Acoustic impedance: 1.39rayl at 25°C
Integrated targets: dot targets/ 45 degrees line target

Dot targets block (spatial resolution)



DESCRIPTIONS

SPECIFICATIONS

Size: mass targets block phantom size: 18 x 7.5 x 11 cm / 7.2 x 3 x 4.4 inch
dot targets block phantom size: 13.5 x 7.5 x 11 cm / 5.4 x 3 x 4.4 inch
Weight: Mass 1.3kg / 2.7lbs
Dot 1.0kg / 2.2lbs

SET INCLUDES

1	mass targets block
1	dot targets block
1	thermometer
1	storage case
1	instruction manual

MATERIALS

Urethane elastomer,
acryl, nylon
Latex free