

YP-800C

Infant Incubator

■ Double side phototherapy treatment function (optional)

Upper phototherapy: Full-touch visual operation, with two working modes: countdown and sequence.

Use PWM control to achieve stepless adjustment of blue light brightness.

Nether phototherapy: Embedded bed structure to make cleaning and maintenance more convenient.

LED light source effective lifespan 50000 hours.

Brief Introduction

- 9-inch LCD color touch screen;
- Two temperature control modes: air mode and baby mode servo control;
- Double skin temperature sensor monitoring system effectively reduces the temperature fluctuation to keep a uniform bed temperature;
- **MASIMO** SpO₂ pulse oximetry function to measure blood oxygen and pulse effectively during motion and low perfusion* (optional);
- Inclination of the bassinet is adjustable steplessly for clinical care;
- Double wall hood, automatic air curtain to reduce heat loss and keep the air temperature constant;
- Dovetail shape column from both sides for installing more medical devices;
- Double insurance design of the front door, double protection to avoid accidental opening of the front door;

- Foldable tray, easy to put aside without dismantlement;
- Independent over-temperature protection system, multiple failure alarm indications to provide multiple safety protection;
- Frequency conversion DC motor effectively reduces the noise in the cabin, and provides a comfortable treatment environment (≤45dB);
- Built-in weighing system to conveniently measure the weight of children and monitor the trend of weight changes (optional);
- Panel damping system, panels fall silently without holding (optional);
- The camera can perform image shooting and video recording for clinical review (optional);
- RS232 connector to support data transmission.

Standard Configuration

Main Body(includes baby compartment, case, controller, IV pole and tray), sensor box, cabinet, skin temperature sensor, >37°C temperature set function, humidity concentration control function.

Optional Configuration

Upper phototherapy unit, nether phototherapy unit, SpO₂ pulse oximetry monitoring device, weighing system, VHA Stand, camera, oxygen concentration control and display system, panel damping system.

* <Performance of Three New-Generation Pulse Oximeters during Motion and Low Perfusion in Volunteers.> Shah N., Ragaswamy H.B., Govindugari K., Estanol L. J Clin Anesth. 2012 Aug;24(5):385-91.



Ningbo David Medical Device Co.,Ltd

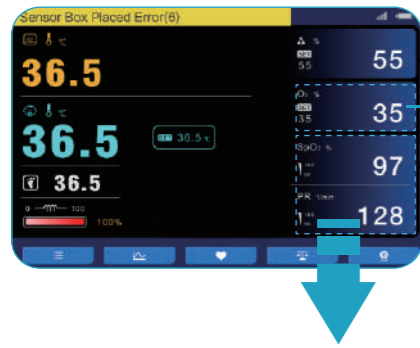
Add: Bldg No. 5 Ningbo Smart Park, #98 Chuangyuan Rd, Hi-tech Zone, Ningbo, China

Tel: 0086-574-87800008 / 87800007

Fax: 0086-574-87803714

Web: www.nbdavid.com/en/ E-mail: sales@nbdavid.com

Specifications are changed without notice for performance improvement. Printed date: May 2022 Version No.: 1



Oxygen concentration control and display system (optional)

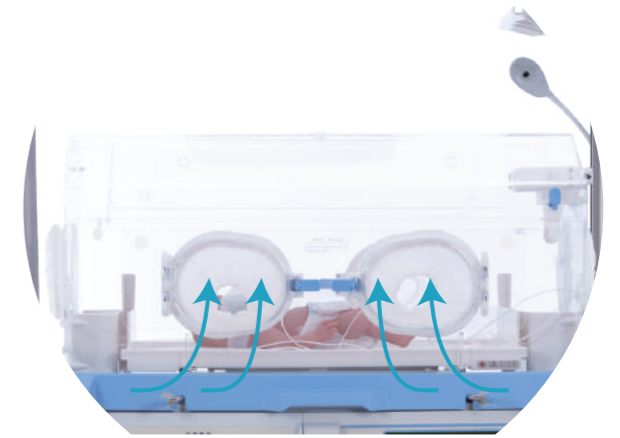
The oxygen concentration in the infant compartment can be adjusted according to clinical needs.

LCD screen

9-inch color LCD touch screen, large characters, clearly visible from a long distance, which is convenient for medical staff to operate and observe. With data storage and trends display.

Automatic air curtain device

Double wall hood, automatic air curtain to reduce heat loss and keep the air temperature constant.



Masimo Pulse oximetry monitoring function (optional)

CCHD screening

When combined with clinical evaluation, the sensitivity of screening for severe congenital heart disease (CCHD) can be increased to 93%.

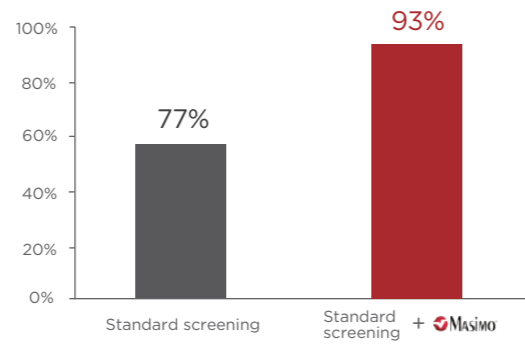
Retinopathy of prematurity

Can significantly reduce the incidence of severe retinopathy (ROP) in premature infants.

During physical activity and hypoperfusion

With 3% false alarms and 5% false alarms.

Independent Clinical Evaluation Versus Improved Screening Sensitivity of Critical Congenital Heart Disease (CCHD)



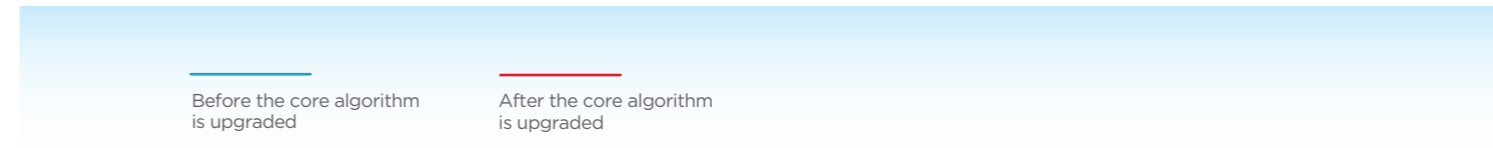
*Zhao et al. Lancet.2014 Aug 30;384(9945):747-54.



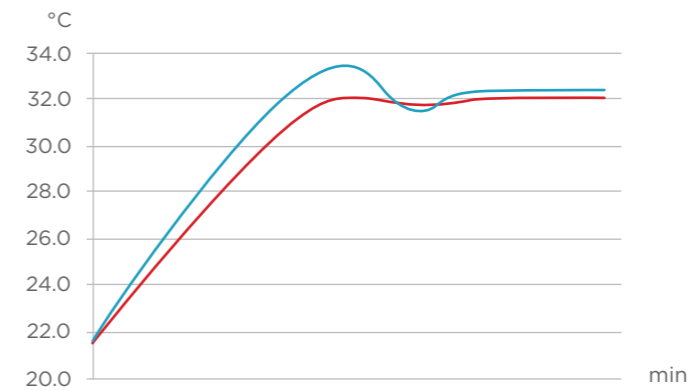
SpO2 probe extension cable



Adhesive sensor

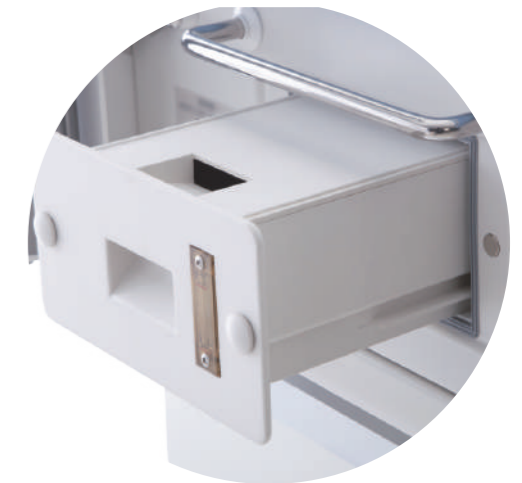


Before the core algorithm is upgraded (blue line) vs After the core algorithm is upgraded (red line)



PID algorithm

The core temperature control algorithm is upgraded, which effectively reduces the temperature fluctuation and makes the bed temperature more uniform.



Humidification control system

PES high temperature resistant material, can be directly disinfected by "high temperature and pressure" method, effectively control the bacteria in the water tank and reduce the risk of cross infection; Drawer type water tank, can be easily disassembled by medical staff, facilitating all-round cleaning and disinfection.



Weighing system (optional)

Built-in weighing system, convenient to measure the weight of children, and monitor the trends of weight changes.



Panel damping system (optional)

Panel damping system, panels fall silently without holding.



Camera (optional)

Perform image shooting and video recording for clinical review.



VHA stand (optional)

The height can be adjusted freely while operating to meet the requirements of medical staff of different heights.