



Enhance Your Endoscopic Training

Refine your endoscopic manipulation skills and develop a comprehensive understanding of the challenges encountered in real-life practice.

Realistic Pathology Scenarios

Discover the effectiveness of our simulator with strategically placed multiple polyps (6) and a stomach ulcer (1) in various locations.



Scan to play the video

Advanced Procedure Practice

You can also practice essential procedures like clipping, biopsy, and snaring. Develop your skills in these advanced techniques to prepare for a variety of clinical scenarios.



Scan to play the video

* Electrocautery operations are not possible during snaring practice.

Learn, Apply, Succeed!



More information about ANATDEL



UGI Endoscopy Simulator

FOR SURGICAL TRAINING



COMPANY

MEDICAL IP CO., LTD.

CEO Sang Joon Park

Tel +82 2 2135 9148

Address 9F, Yeonkang Building, 15, Jong-ro 33-gil, Jongno-gu, Seoul, Republic of Korea

USA OFFICE

Address 3003 N First St, San Jose, CA 95134, United States

Tel +1 408 7094470

CHINA OFFICE

Address 008, Huixin IBC, 1, Zhangbaya Road, Xi an, CHINA

Tel +86 29 81016599

CONTACT US

KOREA dtic@medicalip.com

USA contact@medicalip.com

CHINA china@medicalip.com

TECHNICAL tech@medicalip.com

IR ir@medicalip.com

RECRUIT recruit@medicalip.com



Each of our products is proudly made in-house, from start to finish, ensuring the highest quality and attention to detail at every step of the production process.

MEDICAL IP's 3D Printing Workflow

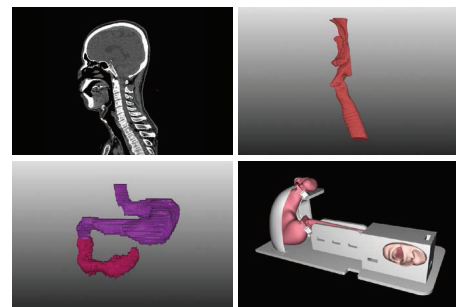
All of our processes, from medical image segmentation and 3D modeling to 3D printing and post-processing, are performed in-house to guarantee exceptional quality in the production of our simulators.



ANATDEL Medical 3D Printed digital twin for surgical planning, simulation, medical research and education.

Streamlined Process for Medical 3D Printed Digital Twin

Using our medical image segmentation and modeling software, MEDIP PRO, we process actual patient medical image data to prepare 3D print files for our simulators.



MEDIP FDA 510(k) · CE · MHRA · MFDS All-in-one Medical Imaging Solution for Analysis, 3D Modeling and Digital Twin.

Innovative Solution For Upper Gastro-Intestinal Endoscopy Training

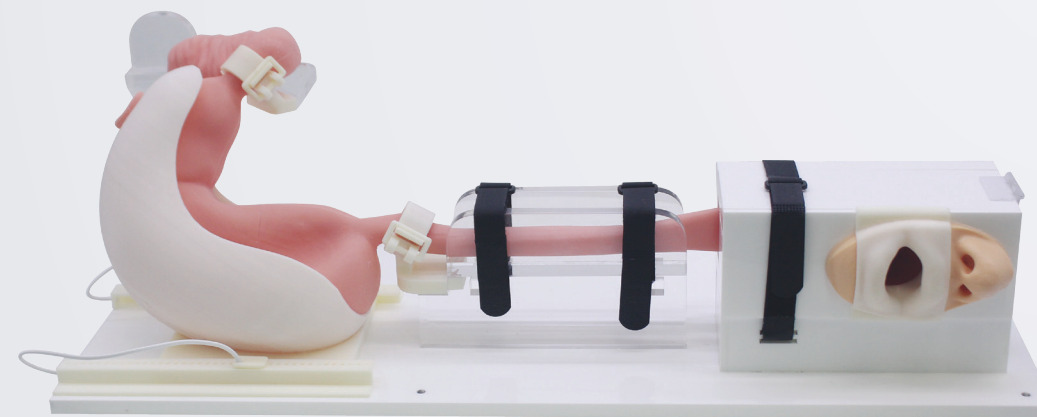
Take your training anywhere with our UGI Endoscopy Simulator

UGI Endoscopy Simulator

Offers utmost accuracy for lifelike texture

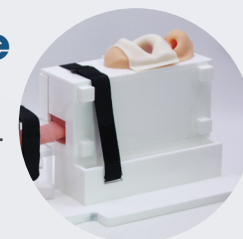
Supported by leading scholars and institutions

Interchangeable difficulty level blocks available



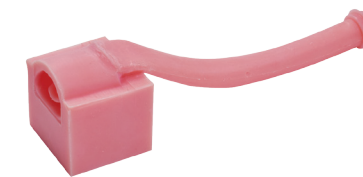
Elevate Surgical Training Expertise

Take your skills to new heights as our simulator seamlessly transitions from endoscopy training to surgical posture practice. Enhance your versatility and prepare for the demands of the operating room.



Tailor Training Challenges

Select and assemble the ideal difficulty level blocks to suit your precise needs. Whether you're a beginner or an advanced user, you have the flexibility to design a training scenario that perfectly aligns with your specific requirements.



Adjustable Esophagus blocks: 3 levels of swallowing difficulty



3 Adjustable difficulty levels: Mouth Blocks

Customized Support for Ultimate Stability

You can effortlessly personalize your comfort and stability by moving the support position to the left or right. Achieve optimal results with ease, ensuring every training session is tailored precisely to your needs.



Precision Through Visual Clarity

Achieve heightened focus with our color-coded markers that emphasize vital areas of observation such as vocal cords, airway, and ampula. Don't miss any crucial details.

