

LONG TERM PRACTICE RICH CLINICAL EXPERIENCES

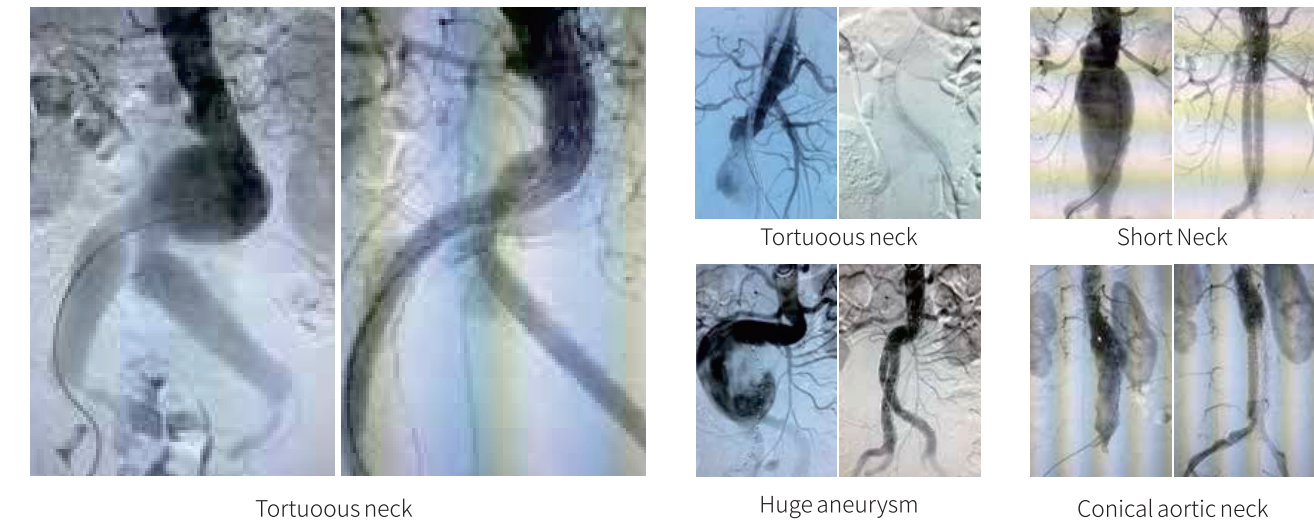
STABLE SUPPORT, LOWER RISK

- 6 barbs of the bare stent ensure that the stent is fixed on vessel wall
- E-PTFE dual membrane reduces endoleak, and the ribbon between the double membranes prevents stent radial expansion
- Self-expanding Nitinol stent offers stable radial force
- Increase the wave spacing on the main body for improving the flexibility

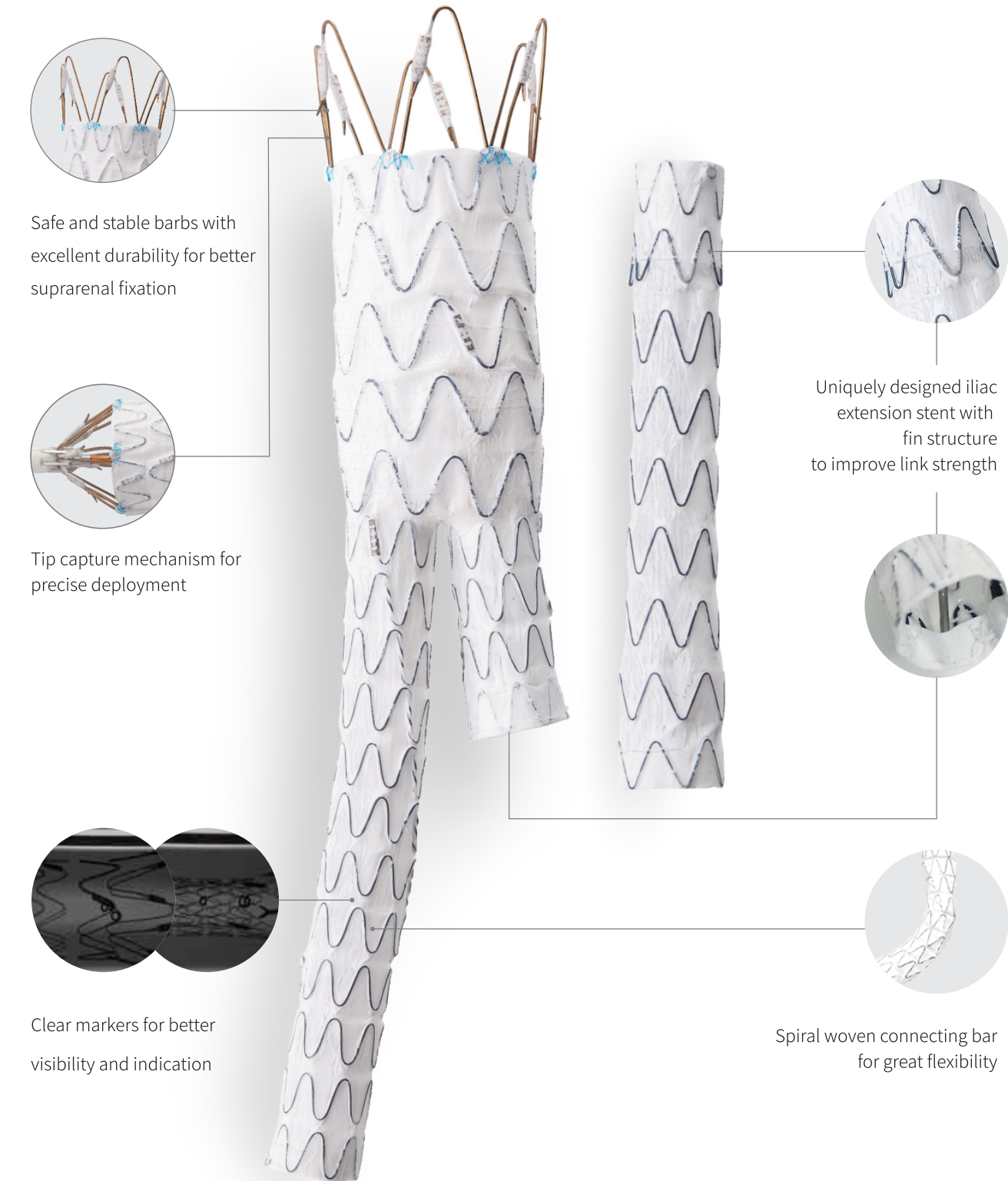
DIVERSIFIED CLINICAL SOLUTIONS

- Three-piece components meet various clinical needs
- 8 radiopaque markers facilitate accurate positioning
- Reduced sheath profile provides easier access

Ankura™ AAA STENT GRAFT CASES



Tortuous neck Huge aneurysm Conical aortic neck



Safe and stable barbs with excellent durability for better suprarenal fixation

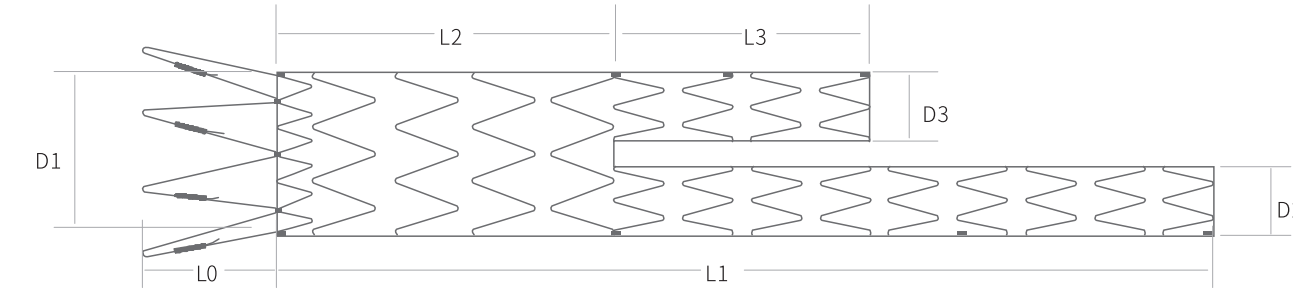
Tip capture mechanism for precise deployment

Clear markers for better visibility and indication

Uniquely designed iliac extension stent with fin structure to improve link strength

Spiral woven connecting bar for great flexibility

PRODUCT SPECIFICATION



D1	D2/D3	L1	L2	L3
Proximal diameter	Ipsilateral/Contralateral limb diameter	Main body covered length (Ipsilateral limb length included)	Main body covered length	Contralateral limb length

MAIN BODY SPECIFICATION

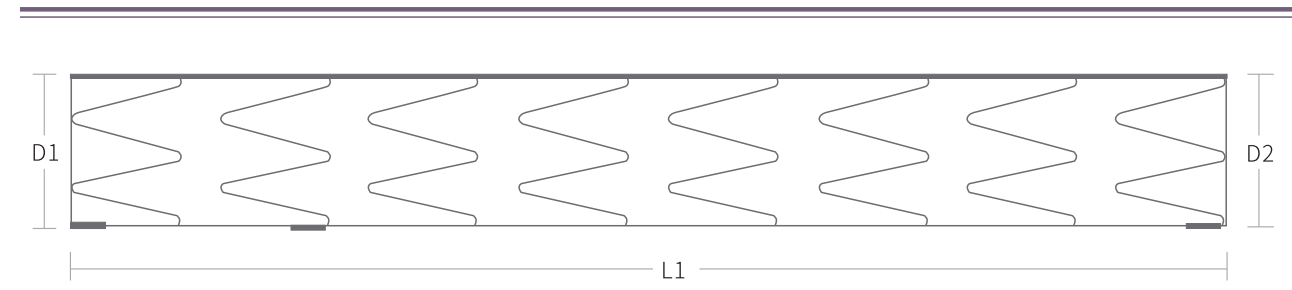
Code	D1(mm)	D2/D3(mm)	L1(mm)	L2(mm)	L3(mm)	Delivery system (Fr.)
AAA2010B100	20	10	100	50	30	20
AAA2010B110	20	10	110	50	30	20
AAA2010B120	20	10	120	50	30	20
AAA2010B130	20	10	130	50	30	20
AAA2010B140	20	10	140	50	30	20
AAA2010B160	20	10	160	50	30	20
AAA2210B100	22	10	100	50	30	20
AAA2210B110	22	10	110	50	30	20
AAA2210B120	22	10	120	50	30	20
AAA2210B130	22	10	130	50	30	20
AAA2210B140	22	10	140	50	30	20
AAA2210B160	22	10	160	50	30	20
AAA2412B100	24	12	100	50	30	20
AAA2412B110	24	12	110	50	30	20
AAA2412B120	24	12	120	50	30	20
AAA2412B130	24	12	130	50	30	20
AAA2412B140	24	12	140	50	30	20
AAA2412B160	24	12	160	50	30	20
AAA2612B100	26	12	100	50	30	20
AAA2612B110	26	12	110	50	30	20
AAA2612B120	26	12	120	50	30	20

MAIN BODY SPECIFICATION

Code	D1(mm)	D2/D3(mm)	L1(mm)	L2(mm)	L3(mm)	Delivery system (Fr.)
AAA2612B130	26	12	130	50	30	20
AAA2612B140	26	12	140	50	30	20
AAA2612B160	26	12	160	50	30	20
AAA2812B100	28	12	100	50	30	20
AAA2812B110	28	12	110	50	30	20
AAA2812B120	28	12	120	50	30	20
AAA2812B130	28	12	130	50	30	20
AAA2812B140	28	12	140	50	30	20
AAA2812B160	28	12	160	50	30	20
AAA3012B100	30	12	100	50	30	22
AAA3012B110	30	12	110	50	30	22
AAA3012B120	30	12	120	50	30	22
AAA3012B130	30	12	130	50	30	22
AAA3012B140	30	12	140	50	30	22
AAA3012B160	30	12	160	50	30	22
AAA3212B100	32	12	100	50	30	22
AAA3212B110	32	12	110	50	30	22
AAA3212B120	32	12	120	50	30	22
AAA3212B130	32	12	130	50	30	22
AAA3212B140	32	12	140	50	30	22
AAA3212B160	32	12	160	50	30	22
AAA3412B100	34	12	100	50	30	22
AAA3412B110	34	12	110	50	30	22
AAA3412B120	34	12	120	50	30	22
AAA3412B130	34	12	130	50	30	22
AAA3412B140	34	12	140	50	30	22
AAA3412B160	34	12	160	50	30	22
AAA3612B100	36	12	100	50	30	22
AAA3612B110	36	12	110	50	30	22
AAA3612B120	36	12	120	50	30	22
AAA3612B130	36	12	130	50	30	22
AAA3612B140	36	12	140	50	30	22
AAA3612B160	36	12	160	50	30	22

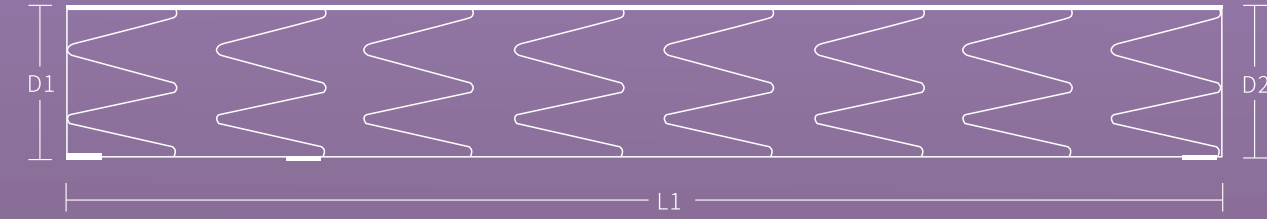
ILIAC EXTENSION PRODUCT SPECIFICATION

Code	Proximal Diameter(mm)	Distal Diameter(mm)	Total covered Length(mm)	Delivery system (Fr.)
CUFF1010C040	10	10	40	18
CUFF1010C060	10	10	60	18
CUFF1010C080	10	10	80	18
CUFF1210C040	12	10	40	18
CUFF1210C060	12	10	60	18
CUFF1210C080	12	10	80	18
CUFF1210C090	12	10	90	18
CUFF1210C100	12	10	100	18
CUFF1210C120	12	10	120	18
CUFF1212C040	12	12	40	18
CUFF1212C060	12	12	60	18
CUFF1212C080	12	12	80	18
CUFF1212C090	12	12	90	18
CUFF1212C100	12	12	100	18
CUFF1212C120	12	12	120	18
CUFF1214C040	12	14	40	18
CUFF1214C060	12	14	60	18
CUFF1214C080	12	14	80	18
CUFF1214C090	12	14	90	18
CUFF1214C100	12	14	100	18
CUFF1214C120	12	14	120	18
CUFF1216C040	12	16	40	18
CUFF1216C060	12	16	60	18
CUFF1216C080	12	16	80	18
CUFF1216C090	12	16	90	18
CUFF1216C100	12	16	100	18
CUFF1216C120	12	16	120	18
CUFF1218C040	12	18	40	18
CUFF1218C060	12	18	60	18
CUFF1218C080	12	18	80	18
CUFF1218C090	12	18	90	18



ILIAC EXTENSION PRODUCT SPECIFICATION

Code	Proximal Diameter(mm)	Distal Diameter(mm)	Total covered Length(mm)	Delivery system (Fr.)
CUFF1218C100	12	18	100	18
CUFF1218C120	12	18	120	18
CUFF1410C040	14	10	40	18
CUFF1410C060	14	10	60	18
CUFF1410C080	14	10	80	18
CUFF1410C090	14	10	90	18
CUFF1410C100	14	10	100	18
CUFF1410C120	14	10	120	18
CUFF1412C040	14	12	40	18
CUFF1412C060	14	12	60	18
CUFF1412C080	14	12	80	18
CUFF1412C090	14	12	90	18
CUFF1412C100	14	12	100	18
CUFF1412C120	14	12	120	18
CUFF1414C040	14	14	40	18
CUFF1414C060	14	14	60	18
CUFF1414C080	14	14	80	18
CUFF1414C090	14	14	90	18
CUFF1414C100	14	14	100	18
CUFF1414C120	14	14	120	18
CUFF1416C040	14	16	40	18
CUFF1416C060	14	16	60	18
CUFF1416C080	14	16	80	18
CUFF1416C090	14	16	90	18
CUFF1416C100	14	16	100	18
CUFF1416C120	14	16	120	18
CUFF1418C040	14	18	40	18



ILIAC EXTENSION PRODUCT SPECIFICATION

Code	Proximal Diameter(mm)	Distal Diameter(mm)	Total covered Length(mm)	Delivery system (Fr.)
CUFF1418C060	14	18	60	18
CUFF1418C080	14	18	80	18
CUFF1418C090	14	18	90	18
CUFF1418C100	14	18	100	18
CUFF1418C120	14	18	120	18
CUFF1420C040	14	20	40	18
CUFF1420C060	14	20	60	18
CUFF1420C080	14	20	80	18
CUFF1420C090	14	20	90	18
CUFF1420C100	14	20	100	18
CUFF1420C120	14	20	120	18
CUFF1422C040	14	22	40	18
CUFF1422C060	14	22	60	18
CUFF1422C080	14	22	80	18
CUFF1422C090	14	22	90	18
CUFF1422C100	14	22	100	18
CUFF1422C120	14	22	120	18

Lower Profile

Ankura™
AAA Stent Graft System

LOWER PROFILE
MORE FLEXIBLE
PRECISER IMPLANTATION



Lifetech Scientific (Shenzhen) Co., Ltd

ADD:8F, LifeTech Scientific Building, No.22, Keji 12th Road South, High-tech Industrial Park, Yuehai Subdistrict, Nanshan District, Shenzhen 518063, P. R. China
Tel:+86-755-86026250 Fax:86-755-86026251
Email:marketing@lifetechmed.com
Web:www.lifetechmed.com

EU authorized representative:
LifeTech Scientific (Europe) Coöperatief U.A.
Oliemolenstraat 60, 6416CB Heerlen, the Netherlands