

## TIP CAPTURE MECHANISM



### Proximal mini wave

- enhances apposition to the aortic wall

### Connecting bar

- offers axial support
- avoids stent shortening

### No suture on the main body

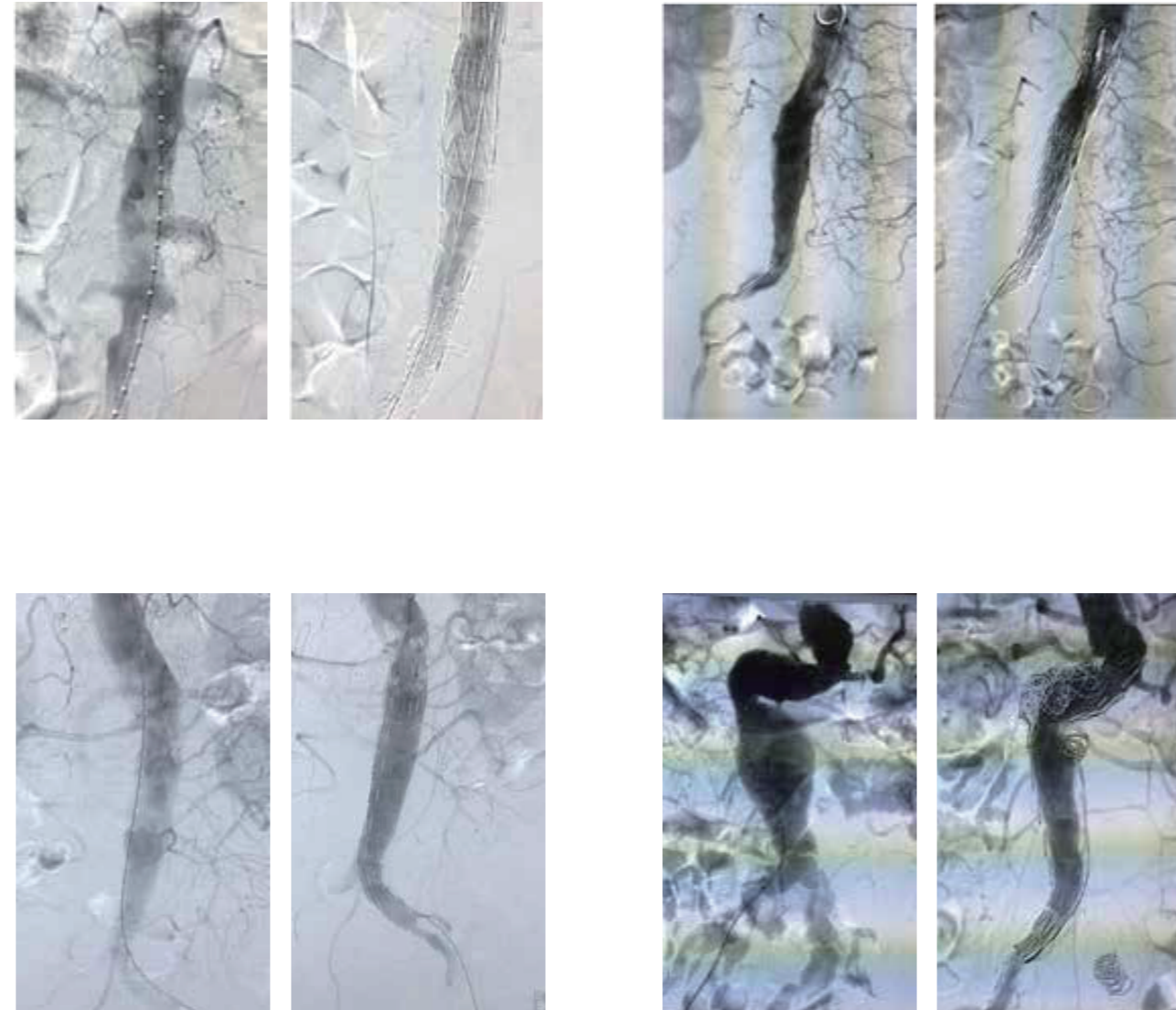
- avoids pinhole leakage (Type IV endoleak)

### e-PTFE dual membrane

- excellent biocompatibility, no Type III endoleak

Ankura™

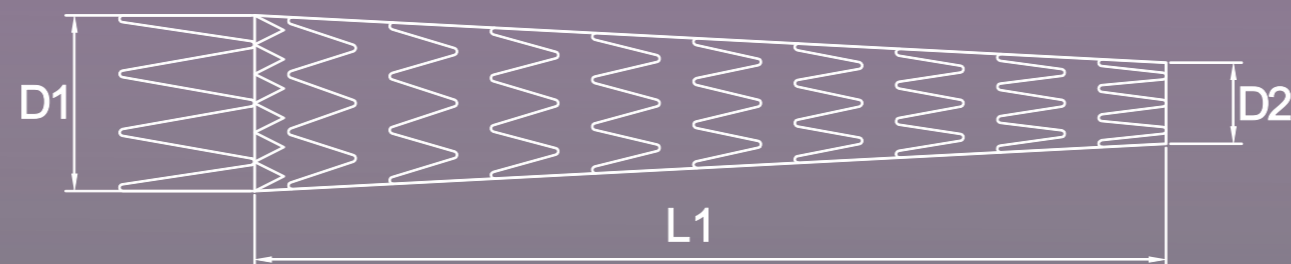
## AUI STENT GRAFT CASES



## PRODUCT SPECIFICATION

Code	Proximal Diameter(mm)	Distal Diameter(mm)	Total covered Length(mm)	Delivery system (Fr.)
AUI2012B120	20	12	120	21
AUI2012B140	20	12	140	21
AUI2012B160	20	12	160	21
AUI2012B180	20	12	180	21
AUI2212B120	22	12	120	21
AUI2212B140	22	12	140	21
AUI2212B160	22	12	160	21
AUI2212B180	22	12	180	21
AUI2214B120	22	14	120	21
AUI2214B140	22	14	140	21
AUI2214B160	22	14	160	21
AUI2214B180	22	14	180	21
AUI2412B120	24	12	120	21
AUI2412B140	24	12	140	21
AUI2412B160	24	12	160	21
AUI2412B180	24	12	180	21
AUI2414B120	24	14	120	21
AUI2414B140	24	14	140	21
AUI2414B160	24	14	160	21
AUI2414B180	24	14	180	21
AUI2612B120	26	12	120	21
AUI2612B140	26	12	140	21
AUI2612B160	26	12	160	21
AUI2612B180	26	12	180	21
AUI2614B120	26	14	120	21
AUI2614B140	26	14	140	21
AUI2614B160	26	14	160	21
AUI2614B180	26	14	180	21
AUI2616B120	26	16	120	21
AUI2616B140	26	16	140	21
AUI2616B160	26	16	160	21
AUI2616B180	26	16	180	21
AUI2812B120	28	12	120	21
AUI2812B140	28	12	140	21
AUI2812B160	28	12	160	21
AUI2812B180	28	12	180	21
AUI2814B120	28	14	120	21
AUI2814B140	28	14	140	21
AUI2814B160	28	14	160	21
AUI2814B180	28	14	180	21
AUI2816B120	28	16	120	21
AUI2816B140	28	16	140	21
AUI2816B160	28	16	160	21
AUI2816B180	28	16	180	21
AUI3012B120	30	12	120	21

Code	Proximal Diameter(mm)	Distal Diameter(mm)	Total covered Length(mm)	Delivery system (Fr.)
AUI3012B140	30	12	140	21
AUI3012B160	30	12	160	21
AUI3012B180	30	12	180	21
AUI3014B120	30	14	120	21
AUI3014B140	30	14	140	21
AUI3014B160	30	14	160	21
AUI3014B180	30	14	180	21
AUI3016B120	30	16	120	21
AUI3016B140	30	16	140	21
AUI3016B160	30	16	160	21
AUI3016B180	30	16	180	21
AUI3212B120	32	12	120	21
AUI3212B140	32	12	140	21
AUI3212B160	32	12	160	21
AUI3212B180	32	12	180	21
AUI3214B120	32	14	120	21
AUI3214B140	32	14	140	21
AUI3214B160	32	14	160	21
AUI3214B180	32	14	180	21
AUI3216B120	32	16	120	21
AUI3216B140	32	16	140	21
AUI3216B160	32	16	160	21
AUI3216B180	32	16	180	21
AUI3412B120	34	12	120	23
AUI3412B140	34	12	140	23
AUI3412B160	34	12	160	23
AUI3412B180	34	12	180	23
AUI3414B120	34	14	120	23
AUI3414B140	34	14	140	23
AUI3414B160	34	14	160	23
AUI3414B180	34	14	180	23
AUI3416B120	34	16	120	23
AUI3416B140	34	16	140	23
AUI3416B160	34	16	160	23
AUI3416B180	34	16	180	23
AUI3612B120	36	12	120	23
AUI3612B140	36	12	140	23
AUI3612B160	36	12	160	23
AUI3612B180	36	12	180	23
AUI3614B120	36	14	120	23
AUI3614B140	36	14	140	23
AUI3614B160	36	14	160	23
AUI3614B180	36	14	180	23
AUI3616B120	36	16	120	23
AUI3616B140	36	16	140	23
AUI3616B160	36	16	160	23
AUI3616B180	36	16	180	23



# Ankura™

AUI Stent Graft System

**Stable support  
Precise Apposition**



## Lifetech Scientific (Shenzhen) Co., Ltd

ADD:8F, LifeTech Scientific Building, No.22, Keji 12th Road South, High-tech Industrial Park, Yuehai Subdistrict, Nanshan District, Shenzhen 518063, P. R. China  
 Tel:+86-755-86026250 Fax:86-755-86026251  
 Email:marketing@lifetechmed.com  
 Web:www.lifetechmed.com

EU authorized representative:  
 LifeTech Scientific (Europe) Coöperatief U.A.  
 Oliemolenstraat 60, 6416CB Heerlen, the Netherlands

2023-EN-1.0