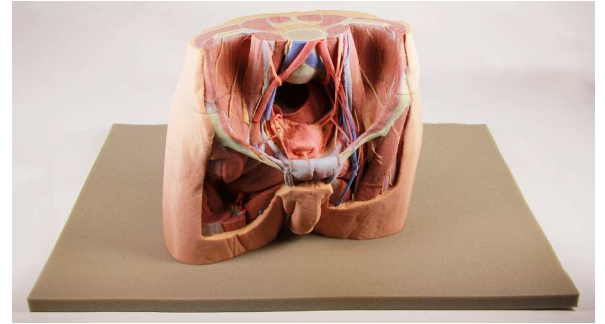
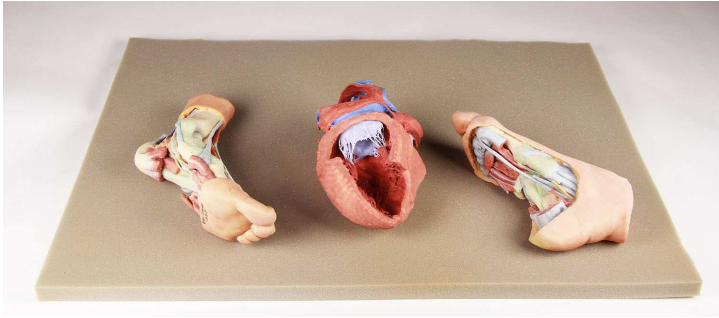
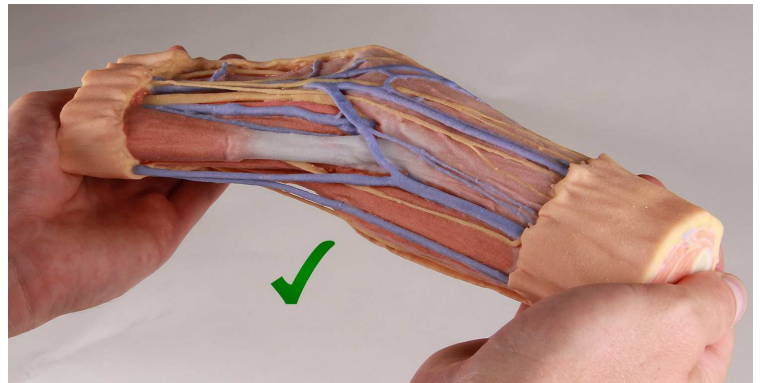




- The 3D prints are best rested on a dense inert foam pad (e.g. high density foam) rather than directly on a table surface.



- We strongly urge a 'look before you grab' philosophy: Handling occur over solid portions of the models where there are no structures spanning open areas or unsupported by material, In other words, even where nerves or vessels are on the surface of muscles, bones or other tissues, ensure that these structures are directly attached to the underlying tissue and not 'under-cut' or separate.



- Unsupported structures or structures spanning open spaces (e.g., blood vessels or nerves passing across areas where they are 'free' of direct attachment) should NOT be placed under pressure by hands, fingers or other pointing devices/materials like labels, or be set down on a surface where weight is placed on these delicate structures.

