

Dedicated to Delivery
Nasco **Life/form**®

Burn Simulation Kit LF00795U Instruction Manual



ISO 9001 and
ISO 13485

Nasco **Plastics**
ISO 9001 and ISO 13485

Products are manufactured using a quality management system certified as being in conformity with ISO 9001 and ISO 13485.

Life/form®

5
Year
Warranty

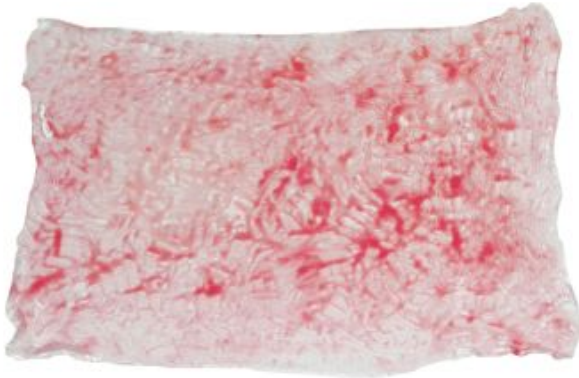
Life/form® Products by Nasco

Warranty



First-Degree Burn: LF00725(A)U

- Appearance — Redness
- Texture — Dry
- Sensation — Painful
- Healing Time — 1 week or less



Second-Degree Burn: LF00725(B)U

- Superficial partial thickness
- Appearance — Red with clear blisters
Blanches with pressure
- Texture — Moist
- Sensation — Painful
- Healing time — 2-3 weeks



Second-Degree Burn: LF00725(C)U

- Deep partial thickness
- Appearance — Red and white with bloody blisters
Less blanching
- Texture — Moist
- Sensation — Painful
- Healing time — Weeks, may progress to third degree



Third-Degree Burn: LF00725(D)U

- Full thickness burn
- Appearance — Stiff and white/brown
- Texture — Dry and leathery
- Sensation — Painless
- Healing time — Requires excision
- Complications — Scarring, contractures, amputation

About the Simulator

Just like a real wound, the materials used in creating the simulated burns are very delicate. Use caution when applying and removing wounds. Wounds are hand-painted with care. Color and shape of the simulated burns may vary.

List of Components

Wounds

- Blisters
- Blood Blisters
- Burns, 1st Degree, 2nd Degree (Superficial), 2nd Degree (Deep), 3rd Degree

Makeup and Accessories

- Alcohol Prep Swabs
- Ash Dust Powder
- Black Soot Powder
- Blood Blister Makeup
- Blood Paste
- Brushes
- Clotted Red Makeup
- Dirt Powder
- Foam Wedges
- Gloves
- Glycerin
- Hard Carry Case
- Injury Shades Makeup Wheel
- Instruction Booklets
- Light Cream Makeup
- Magic Blood Powder
- Red Rubber Round
- Spirit Gum Remover
- Spirit Gum with Brush
- Spray Bottle
- Stipple Sponges
- Wet Wipes

Care of Simulator

Cleaning

Wounds will become less tacky with use. Clean wounds with warm water and mild soap. Dry completely with a clean towel or allow to air dry.

Storage

Place clean, dry wounds in a sealed bag.

Cautions

To extend the life of your simulated burns, handle them with care and follow the cleaning and storing procedures. Wounds are delicate and easily tear during removal and application.

Makeup used with wounds may stain human models, trainer/manikin, and simulated wound. Use makeup with care.

Solvents or corrosive materials will damage the simulated wounds. Never place wounds on newsprint, printed paper, plastic or ball-point pen. These materials will transfer indelible stains.

Replacement Supplies for the Burn Simulation Kit

- LF00725(A)U** 1st Degree Burn Roll
- LF00725(B)U** 2nd Degree Superficial Partial Thickness Burn Roll
- LF00725(C)U** 2nd Degree Deep Partial Thickness Burn Roll
- LF00725(D)U** 3rd Degree Burn Roll
- LF00725U** Simulated Burns, Set of 4 (1st, 2nd, 2nd, 3rd)
- LF00726U** Blisters, 1 Roll, 7" x 10"
- LF00727U** Blood Blisters, 1 Roll, 7" x 10"
- LF00751U** Blood Paste, 1 oz.
- LF00755U** Spirit Gum, 1 oz. w/Brush
- LF00756U** Spirit Gum Remover, 2 oz.
- LF00758U** Magic Blood Powder, Mini
- LF00760U** Injury Shades Makeup Wheel, 1-oz. Jar
- LF00764U** Grease Paint Makeup, Blood Blister, ½-oz. Jar
- LF00777U** Grease Paint Makeup, Clotted Red, ½-oz. Jar
- LF00780U** Grease Paint Makeup, Light Cream, ½-oz. Jar
- LF00786U** Black Soot Powder, 5-oz. Jar
- LF00787U** Ash Dust Powder, 5-oz. Jar
- LF00788U** Dirt Powder, 5-oz. Jar

Available Supplies for the Burn Simulation Kit

- LF00750U** Blood Gel with Brush
- LF00752U** Modeling Wax, Flesh Color, 1.75-oz. Jar
- LF00753U** Modeling Wax, Blood Color, 1-oz. Jar
- LF00754** Liquid Latex, Clear, 1-oz. Bottle
- LF00757U** Makeup Remover, 2-oz. Bottle
- LF00759(B)U** Pus Jar, Flesh Color, 2-oz. Jar
- SB49386U** Skin Tite Adhesive

Available Supplies for the Ultra Nursing Wound Simulation Kit

LF00761U	Primary Colors Makeup Wheel
LF00762U	Special Effects Makeup Wheel
LF00763U	Grease Paint Makeup, Capillary Shadow, 1/2-oz. Jar
LF00765U	Grease Paint Makeup, Blithe Spirit, 1/2-oz. Jar
LF00766U	Makeup, Rose Blush, 1/2-oz. Jar
LF00767U	Makeup, Mold Green, 1/2-oz. Jar
LF00768U	Grease Paint Makeup, White, 1/2-oz. Jar
LF00769U	Grease Paint Makeup, Black, 1/2-oz. Jar
LF00770U	Grease Paint Makeup, Red, 1/2-oz. Jar
LF00771U	Grease Paint Makeup, Green, 1/2-oz. Jar
LF00772U	Grease Paint Makeup, Deep Yellow, 1/2-oz. Jar
LF00773U	Grease Paint Makeup, Yellow, 1/2-oz. Jar
LF00774U	Grease Paint Makeup, Forest Green, 1/2-oz. Jar
LF00755U	Grease Paint Makeup, Blue, 1/2-oz. Jar
LF00776U	Grease Paint Makeup, Dark Purple, 1/2-oz. Jar
LF00777U	Grease Paint Makeup, Clotted Red, 1/2-oz. Jar
LF00778U	Grease Paint Makeup, Corpse Flesh, 1/2-oz. Jar
LF00779U	Grease Paint Makeup, Frankie Gray, 1/2-oz. Jar
LF00781U	Grease Paint Makeup, Ebony, 1/2-oz. Jar
LF00782U	Grease Paint Makeup, Milk Chocolate, 1/2-oz. Jar
LF00783U	Grease Paint Makeup, Medium Honey, 1/2-oz. Jar
LF00784U	Grease Paint Makeup, Warm Honey, 1/2-oz. Jar
LF00789U	Crème Make-up Wheel (Auguste)
LF01116U	KY Jelly
LF01178U	Blood Kit, Blue & Red, Pkg. of 5
LF03774U	Methyl Cellulose
LF09919U	Nasco Cleaner

Other Available *Life/form*® Replacement Wounds and Supplies

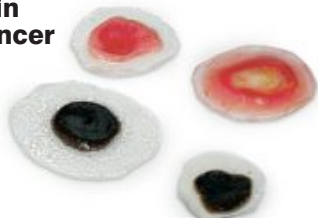
LF00730U
Pressure
Ulcers



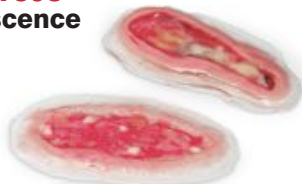
LF00735U
Incisions



LF00731U
Skin
Cancer



LF00736U
Dihiscence



LF00732U
Cysts



LF00737U
Lacerations



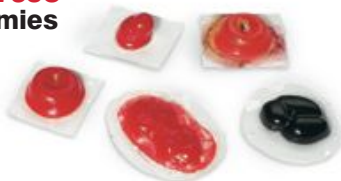
LF00733U
Infected Cyst



LF00734U
Abrasion



LF00738U
Ostomies



LF00759(A-C)U
Stool, Pus, & Mucous



LF00739U
Boils



Nasco Fort Atkinson

901 Janesville Avenue, P.O. Box 901
Fort Atkinson, Wisconsin 53538-0901
1.800.558.9595

eNasco.com • E-mail: lifeform@eNasco.com

Nasco **Life/form**®

HOW TO CREATE A SECOND DEGREE BURN





Cut the size and shape of the burn you want to moulage using a scalpel or scissors. Place the wound in the area where you want it to be modeled. Then place clotted red makeup around area using foam wedges.

Materials Needed:

- Clotted red makeup
- Foam wedges
- Scissors



Remove wound and brush spirit gum on the location area and wound. Let the spirit gum dry until it feels sticky. If you choose not to use the spirit gum as an adhesive, the burn should stick lightly to the location naturally.

Materials Needed:

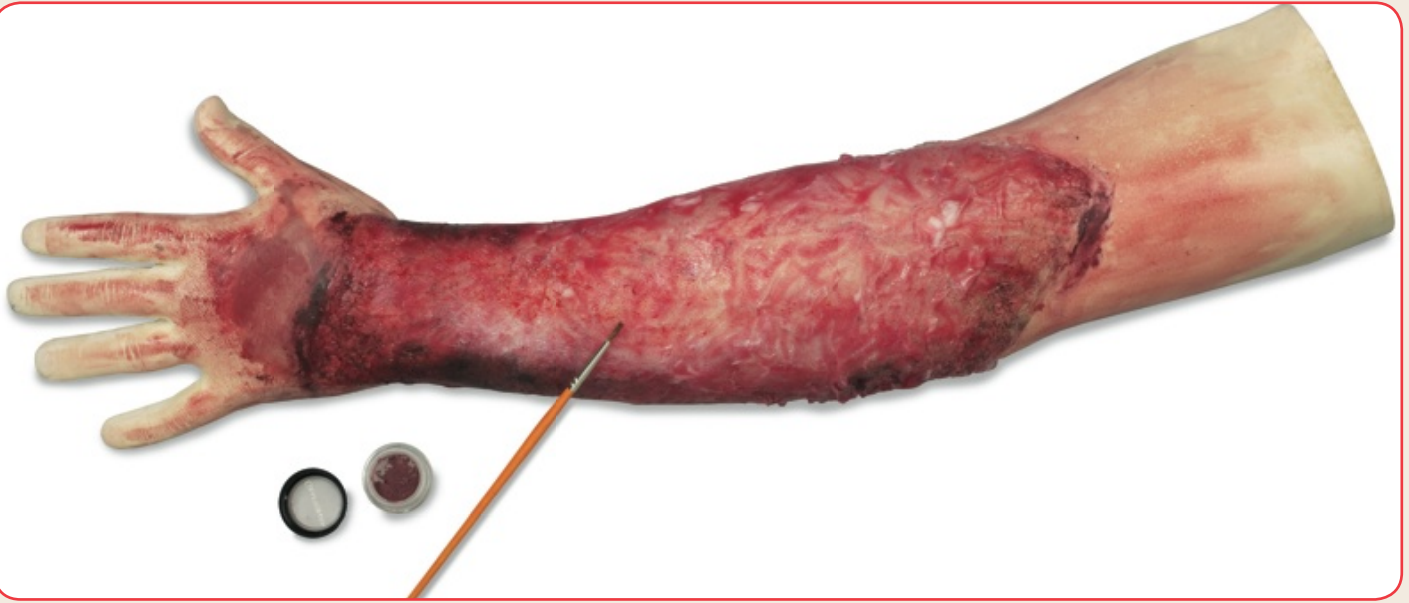
- Spirit gum



When burn is in final position, add more blood blister and clotted red makeup slightly around and on top of the burn. Also add a bit of light cream makeup on top of arm. Blood paste can also be added around the arm using a popsicle stick.

Materials Needed:

- Blood blister makeup
- Blood paste
- Clotted red makeup
- Foam Wedges
- Light cream makeup
- Spirit gum



Use a brush to add magic blood powder. Then use the brush to apply a small amount of water to the wound.

Materials Needed:

- Brush
- Magic blood powder
- Water



Use a small amount of soot using a brush or foam sponge.
Glycerin may also be added for shine.

Materials Needed:

- Brush or foam sponge
- Glycerin
- Soot

NOTE: The steps given are only a suggestion — have fun and experiment!

Other Available *Life/form*® Simulators



**Life/form® Burn Simulation Kit
(LF00795U)**

**Life/form® Advanced Nursing Wound
Simulation Kit (LF00794U)**



901 Janesville Avenue, P.O. Box 901
Fort Atkinson, Wisconsin 53538-0901

eNasco.com
1-800-558-9595

E-mail: lifeform@eNasco.com

COPYRIGHT © NASCO 2012 PRINTED IN U.S.A. NP052-13

Nasco **Life/form**®

HOW TO CREATE A THIRD DEGREE BURN





Figure 1

When starting a moulage, first use an alcohol wipe to clean person or manikin.

Note: Makeup may stain manikin or person modeling. Check manufacturer's recommendations prior to using alcohol wipes or makeup on manikins.

Materials Needed:

- Alcohol pads
- 3rd degree burn
- Manikin or person



Figure 2

Cut the desired size and shape of the 3rd degree Nasco burn LF00725D using a scalpel or scissors. Place the wound in the area where you want it to be modeled. Then place clotted red makeup around area and slightly under the edges using foam wedges.

Materials Needed:

- Clotted red makeup
- Foam wedges
- Scissors/scalpel
- 3rd degree burn (LF00725D)



Figure 3

The wound should stick lightly to the location naturally. For a greater adhesion, brush spirit gum on wound location and back of wound. Let spirit gum dry until it feels sticky before final placement of wound. Brush liquid latex over entire burn area and let dry.

Materials Needed:

- Spirit gum (if needed)
- Liquid latex

NOTE: Latex is a commonly known allergen — use with caution.



Figure 4

When burn is in final position, add clotted red and blood blister makeup slightly around and on top of the burn(s). Also add a bit of light cream make-up on top of arm. Use foam wedges to blend all makeup above. A craft stick is great for applying the blood blister makeup. Blood modeling wax may help with blending burn edges and skin until a seamless appearance is achieved.

Materials Needed:

- Blood blister makeup
- Blood paste
- Clotted red makeup
- Light cream makeup
- Foam wedges
- Craft stick

LF00758U



Figure 5

Use brush to add blood powder. Then use brush to apply a small amount of water to the wound. Peel liquid latex skin back slightly (from figure 2) to create a blistering effect. Add blood blister, clotted red and injury shades maroon makeup to blisters. Using a foam wedge helps with blending makeup.

Materials Needed:

- Brush
- Foam wedges
- Blood blister makeup
- Blood powder
- Clotted red makeup
- Injury wheel makeup – maroon



Figure 6

Add more of the liquid latex over the top of the pigment and let the latex completely dry. Adding another layer of latex adds to a visual of skin pulling from arm.

Materials Needed:

- Liquid latex



Figure 7

Add more clotted red, light cream, injury shades makeup (purple and maroon) on top of the liquid latex and around the whole arm. Latex can be peeled back, then apply soot using foam wedges (from figures 2 and 5). Open the soot jar **CAREFULLY!** Use foam wedges to apply.

NOTE: The steps given are only a suggestion — have fun and experiment!

Materials Needed:

- Clotted red makeup
- Light cream makeup
- Soot
- Foam wedges
- Injury shades makeup—purple
- Injury shades makeup—maroon



Storage Tips:

- The burns can be reused if properly placed into plastic wrap or a resealable bag.
- The burns can be cleaned with soap and water and air dried.
- Some dirt and makeup will be removed, but some makeup will remain.
- The materials used in creating lifelike wounds are very delicate. Each wound is hand painted with care. Colors and shapes may vary slightly.
- Nasco reserves the right to change product color, materials, supplies, or function as needed.

Other Available *Life/form*® Simulators



Life/form® Advanced Nursing Wound Simulation Kit (LF00794U)



901 Janesville Avenue, P.O. Box 901
Fort Atkinson, Wisconsin 53538-0901

eNasco.com
1-800-558-9595

E-mail: lifeform@eNasco.com
COPYRIGHT © NASCO 2014 PRINTED IN U.S.A. NP049-14