



# Female Catheter Model

## LF01151U

### INSTRUCTION CARD



**5-Year Warranty**

Actual product may vary slightly from photo. Nasco reserves the right to change product color, materials, supplies, or function as needed.

## USING THE MODEL

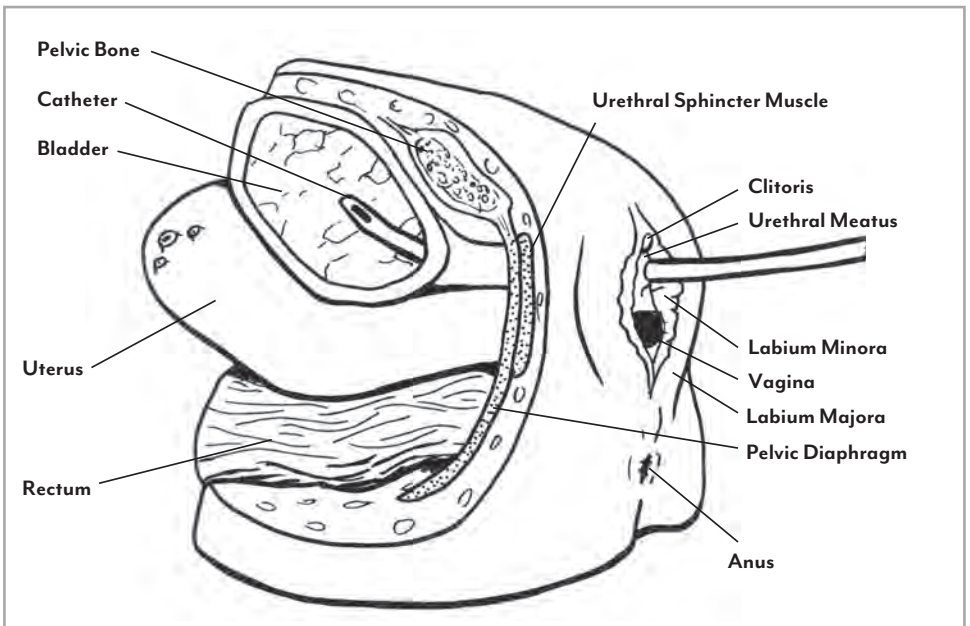
- Use this model to practice sterile technique and proper cleansing procedures before, during, and after insertion.
- The model will accept any catheter size 16 or smaller.
- Be sure the balloon on the catheter is fully deflated before insertion or removal. Always lubricate the catheter thoroughly before each insertion.
- Spread the labia, locate the urethral meatus between the clitoris and vagina, and gently insert the catheter until it is positioned within the bladder (about 7.5 cm). Proper insertion in a live patient is evidenced by a flow of urine through the tube.

## CARING FOR THE MODEL

- The model may be washed in mild soap and water if it becomes soiled.
- Always store it in the plastic bag when not in use.
- Printed material or ballpoint pens will transfer indelible stains to the model. Certain finishes may also be damaged from prolonged contact with the model.

## AVAILABLE SUPPLIES

- LF01127U** 16 FR Foley Catheter  
**LF01128U** 16 FR Foley Catheter, 10-pack  
**LF00985U** Lubricant Kit, 2 oz. bottles, 6-pack



ONLINE: NascoHealthcare.com  
EMAIL: lifeform@enasco.com  
PHONE: 1.800.431.4310  
ADDRESS: 901 Janesville Ave.  
Fort Atkinson, WI 53538