

## **GERI™/KERI™ PRESSURE INJURY FOOT**

**Life/form**® Elderly Pressure Injury Foot for the care and cleaning of pressure injuries in various stages. This Pressure Injury Foot can be used as a stand-alone trainer or added to any of the **Life/form**® **GERI™/KERI™** Manikins. Contains all four severity stages:

### **STAGE 1**

Located on the bottom of the toe. Surface of the skin is red. A patient may feel the area is painful, firm, soft, warmer, or cooler compared to other skin tissue.

### **STAGE 2**

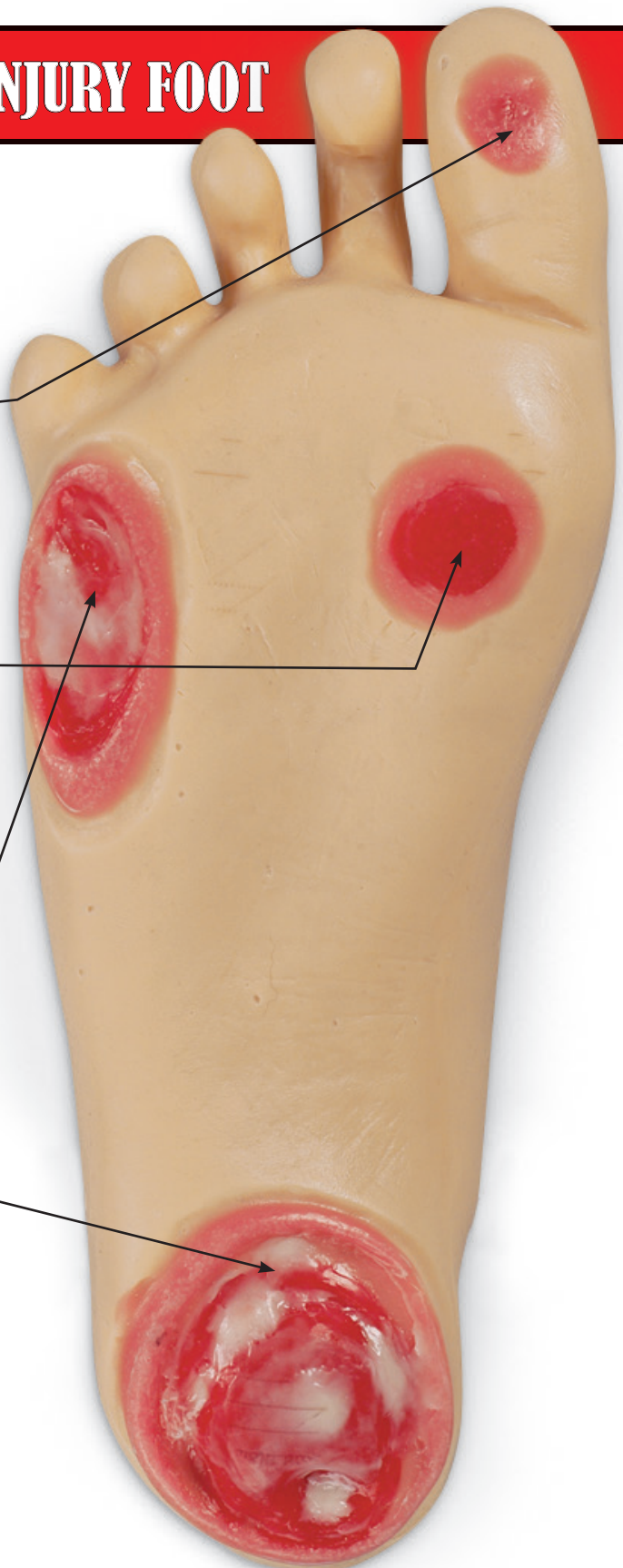
Located on the bottom of the foot just under the toe. Surface of the skin is pink or red. Wound extends deeper into the skin layers. Partial thickness loss of dermis presenting a shallow open ulcer with a red-pink wound bed.

### **STAGE 3**

Located on the side of the foot. Surface of the skin is red. Wound looks like a crater and reaches the bottom layer of the skin. Full thickness tissue loss. Subcutaneous fat may be visible but bone, tendon, and muscle are not exposed.

### **STAGE 4**

Located on the heel of the foot. Surface of the skin is red with rolled wound edges. Full thickness tissue loss with exposed bone, tendon, ligament, cartilage, or muscle. Slough or eschar may be present on some parts. Often includes undermining and/or tunneling.

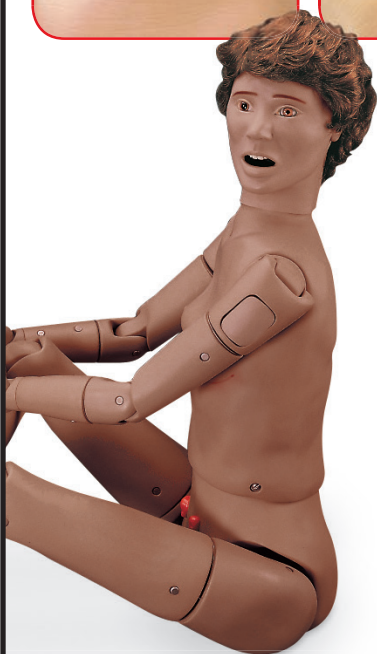
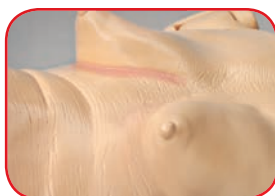




### Realistic Patient Positioning, Flexibility, & Superior Range of Motion

No other manikin features movements as natural as the **GERi™** or **KERi™** for patient positioning, range of motion, and patient flexibility. All major joints have natural movement to provide realistic practice of patient handling. Hands and feet are made of soft, flexible **Life/form®** material for added realism.

- Ankle – Eversion, Inversion, Dorsiflexion, Plantarflexion
- Elbow – Extension, Flexion, Pronation, Supination
- Fingers – Abduction, Adduction, Flexion (soft, lifelike material)
- Hip – Abduction, Adduction, Rotation, Hyperextension
- Knee – Extension, Flexion
- Neck – Rotation, Hyperextension, Lateral Flexion
- Shoulder – Abduction, Adduction, Rotation, Hyperextension
- Toes – Abduction, Adduction, Flexion (soft, lifelike material)
- Trunk – Rotation, Hyperextension
- Wrist – Flexion, Hyperextension, Radial Flexion, Ulnar Flexion



- **GERi™** has an elderly appearance with skin wrinkles and folds
- **KERi™** has a non-age-specific appearance
- Complete lifelike range of motion, realistic patient positioning and non-pinching joints — moves like a person
- Lightweight — approximately 28 lbs.
- Full-size adult manikin — measures 58"
- Overall female appearance
- Converts to male with removal of wig and attachment of male genitals

#### Patient Care Simulation:

- Bandaging and Wound Dressing
- Bed Baths
- Clothing Changes
- Denture Placement and Removal — Upper and Lower
- Ear Canal Irrigation, Otic Drops, and Hearing Aid Placement
- Eye Irrigation
- Finger and Toe Manipulation with Bandaging — Flexible and Individually Molded
- Hair Care Washing and Combing

- Ideal for OBRA Required Training
- **Life/form®** 5-Year Warranty
- Carry case not included

#### Visual Inspection:

- Normal and Cancerous Mole
- Stage 1 Sacral Ulcer
- Dilated and Constricted pupils
- Reddened Skin Folds

- Intramuscular Injection Sites — Arm, Thigh, Buttock
- Oral and Nasal Hygiene — Lavage, Gavage, and Suctioning
- Ostomy Care — Ileostomy and Colostomy Tissue Maintenance and Appliance Application, Lavage, and Suctioning
- Patient Positioning
- Patient Transfer Techniques
- Pericare
- Tracheostomy Care - Lavage and Suctioning

See our website for a full list of **GERi™/KERi™** supplies.

## Other Available **Life/form®** Simulators

### Basic Manikin with Carry Case

- LF04039U **GERi™** Light Skin
- LF04038U **KERi™** Light Skin

### Basic Manikin without Carry Case

- LF04040U **GERi™** Light Skin
- LF04115U **GERi™** Medium Skin
- LF04021U **KERi™** Light Skin
- LF04020U **KERi™** Medium Skin

### Complete Manikin

- LF04001U **GERi™** Light Skin
- LF04116U **GERi™** Medium Skin
- LF04020U **KERi™** Light Skin
- LF04021U **KERi™** Medium Skin

### Advanced Manikin

- LF04030U **GERi™** Light Skin
- LF04117U **GERi™** Medium Skin
- LF04022U **KERi™** Light Skin
- LF04122U **KERi™** Medium Skin

### Complete Auscultation

- LF04003U **GERi™** Light Skin
- LF04118U **GERi™** Medium Skin
- LF04023U **KERi™** Light Skin
- LF04123U **KERi™** Medium Skin

### Advanced Auscultation

- LF04005U **GERi™** Light Skin
- LF04119U **GERi™** Medium Skin
- LF04026U **KERi™** Light Skin
- LF04124U **KERi™** Medium Skin

Actual product may vary slightly from photo. Nasco reserves the right to change product color, materials, supplies, or function as needed.