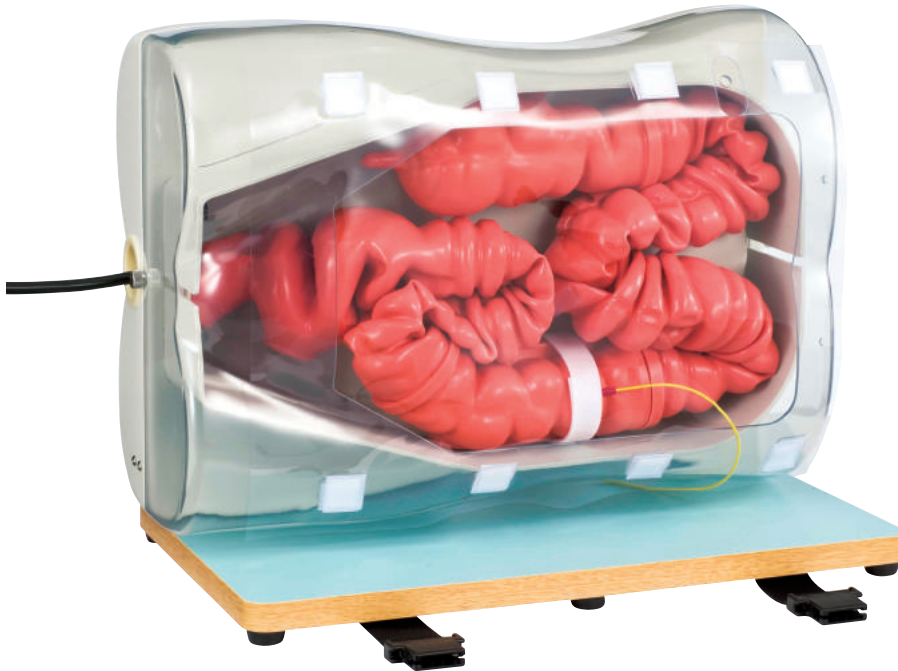


Colonoscopy (Lower GI Endoscopy) Simulator Type II

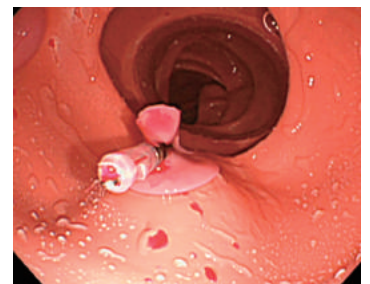
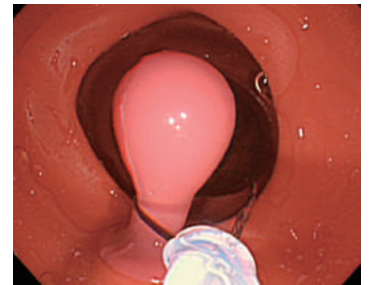
with storage case

■ Outline

The Colonoscopy Simulator is a training model for practicing colonoscopy insertion. By attaching various optional parts, it allows training in endoscopic interventions, such as resecting a polyp and stopping bleeding, and insertion into the small intestine using a balloon enteroscope.



Option
Training in resecting a polyp and controlling the bleeding is possible!



■ Features

- The simulator is made of special silicone rubber that feels like a living body in the observation field. The internal color also closely resembles that of the living body.
- Observation can be performed by attaching a simulated polyp (for observation) in the ascending and descending colons.
- LST (laterally spreading tumor) is reproduced in the ascending colon.
- By attaching the optional "simulated polyps (for polypectomy)", training in the endoscopic treatment of polyps, such as snare resection and clipping hemostasis, can be carried out.
* Simulated polyps can be attached to the ascending and descending colons.
- By attaching the optional "small intestine", training in enteroscopic insertion into the small intestine and the shortening technique can be accomplished using double balloon and single balloon endoscopes.

Components

Main unit	1	Polyp attachment band	1
Rectum/sigmoid colon part	1	Flange plate	1
Descending colon part	1	Holding table	1
Transverse colon part	1	Simulated peritoneal membrane sheet	1
Ascending colon part	1	Screws for flange plate	1
Simulated polyps (for observation):	2kinds	Screws for transparent cover	1
Conduction cable for Simulated Polyps (for polypectomy)	1	Screw for transverse colon	1
		Storage case	1

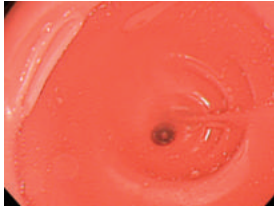
Sold Separately

LM-107A	Small Intestine for Colonoscopy (semi-difficult type)	1
LM-107B	Small Intestine for Colonoscopy (easy type)	1
LM-107C	Ascending Colon for Colonoscopy	1
LM-107D	Descending Colon for Colonoscopy	1

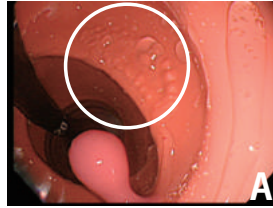
LM-103A	Simulated Polyp (for polypectomy): 5 count	1
LM-107E	Conduction cable for Simulated Polyps	1

Anatomical sites and lesions

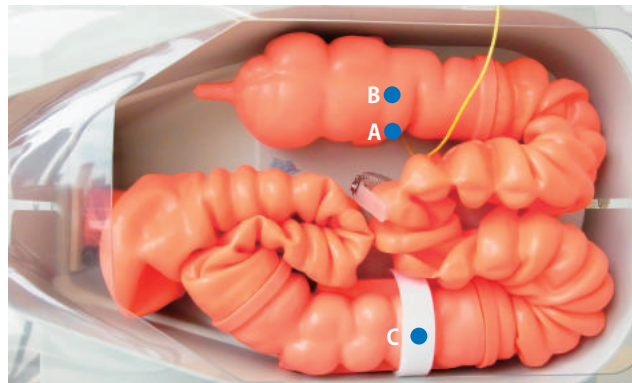
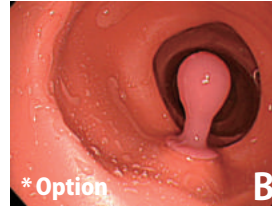
Cecum



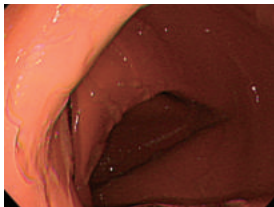
LST (laterally spreading tumor)



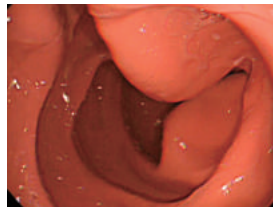
Ascending colon polyp (for polypectomy)



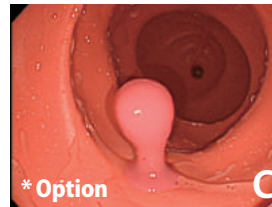
Transverse colon



Rectum



Sigmoid colon



Descending colon polyp (for polypectomy)

Option LM-103A

Simulated Polyp (for polypectomy) 5count



- Polyps can be resected with an electrical scalpel, and it will bleed.
- Techniques to stop bleeding using a clipping method are possible.
- The type of the polyp is Yamada classification type IV.
- *The disposable return electrode is not included.
- *Always store the simulated polyp (for polypectomy) in the refrigerator (2°C to 10°C, do not freeze).



When assembly is completed

Small intestine

Practical training for enteroscopy (balloon enteroscopy) can be performed.

- Practical training for the double balloon method can be performed using a double balloon enteroscope.
- Practical training for the single balloon method can be performed using a single balloon enteroscope.
- Using each type of balloon enteroscopy, insertion into the large and small intestine and shortening technique can be performed.
- The small intestine has a total length of 120 cm and contains an internal scale with intervals of 30 cm to enable the user to confirm the length of insertion.

The level of difficulty of inserting the enteroscope into the small intestine can be changed. (Two types)